

HUGE



HUGE DENTAL USA LLC
Web: www.hugedentalusa.com
Add: 4010 Valley Blvd STE 104, Walnut, CA 91789, USA
Email: info@hugedentalusa.com Tel: +1 626 283 5808

[f](#) [@](#) [v](#) [in](#)
Follow @HUGE Dental USA

v2.0-202509

VinciSmile®

CLINICAL SOLUTION

Your Partner In
Prosthetic Dentistry



VinciSmile®

VinciSmile is committed to being your reliable clinical partner, providing top-notch dental solutions. We guarantee excellent clinical practice with the use of high-quality materials, ensuring the best outcomes for the patients.

NOBILCAM®

NOBILCAM CAD/CAM solution provides various types of Zirconia and PMMA DISC to dental laboratories in order to have a positive impact on dental patient health.

NOBILDENT®

NOBILDENT teeth are designed to look completely natural in the mouth due to the gentle blend of translucent incisal and lifelike reflective esthetics of the labial surface.

HUGE DENTAL USA is a worldwide dental supplier headquartered in Los Angeles, California USA. We offer a wide range of dental lab and clinical solutions, including NOBILDENT Resin Teeth, NOBILCAM CAD/CAM Materials, NOBILTRAY Lab Materials, PERFIT Elastomeric Impression Material, Clinical Restorative Materials, and Invisible Orthodontic Appliance, etc.

Our company is committed to providing exceptional support services, offering comprehensive counseling and training for employees, agents, and customers. As an FDA-cleared facility, we adhere to strict production quality assurance standards and maintain ISO 13485 certification.





TABLE OF CONTENTS

Your Partner in Prosthetic Dentistry

01 Dental Restorative Materials

Pretreatment Materials

- 03 · Light Cure Dental Adhesive
- 05 · Phosphoric Acid Etching Gel
- 06 · Hydrofluoric Acid Etching Gel
- 07 · Ceramic Coupling Agent

TopCEM Adhesive Resin Cement

- 08 · Dual Cure Resin Cement
- 11 · Universal Adhesive Cementation Solution
- 13 · Self-Adhesive Resin Cement
- 15 · Resin Modified Glass Ionomer Cement-Luting

TopCEM Aesthetic Veneer Cement

- 16 · Light Cure Veneer Cement & Veneer Try-in Gel
- 17 · Veneer Cementation Solution

Build-up Material

- 19 · Core Build-up Material

TrusFIL Composite Restorative

- 21 · Universal Composite Restorative
- 23 · Flowable Composite Restorative
- 25 · Universal Composite Restorative: TrusFIL X-Blend

Preventive Dental Care

- 27 · Enamel Coating Resin
- 29 · Fluor Protector

02 Dental Impression Materials

- 33 · Putty
- 34 · Heavy Body
- 35 · Regular Body-Transparent
- 37 · Monophase
- 38 · Light Body
- 39 · Super Light Body
- 40 · A-Silicone for Bite Registration
- 41 · Tray Adhesive
- 42 · Impression Kit

04 Invisible Orthodontic Appliance

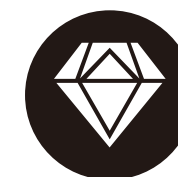
- 57 · Clear Aligner

03 Glass Ionomer Cement

- 52 · Glass Ionomer Cement LuFill HS
- 53 · Glass Ionomer Cement Luting I
- 54 · Glass Ionomer Cement Filling I

Dental Restorative Materials

A VAST RANGE OF PRODUCTS, TO SATISFY YOUR
VERSATILE REQUIREMENTS.



38 years dental
background



Widely sold in
100+ countries/regions



Professional R&D team
in Beijing, Qingdao
and Rizhao



Full solution provider
for clinical application



HugeBond Universal FliPro

Light Cure Dental Adhesive

Indication

- Direct bonding under a light-cured composite or compomer fillings.
- Repair of dental restorations of ceramic, composites and metal alloys.
- Indirect dental restorations cementation with resin cement.
- Seal hypersensitive areas of teeth.

8TH
GENERATION

Universal Application

- Contains MDP monomer which enhances chemical adhesion to direct and indirect restorations.
- Suitable for various substrates.
- Compatible with all etching techniques, with cement of light-cured, self-cured and dual-cured.

Reliable Bonding

- Strong bonding strength no lower than 20MPa.
- Low film thickness around 3µm.
- Ultra-mild Ultra-mild pH value (2.7) provides excellent dentin bond strengths and enamel bonds.

Excellent Operative Experience

- Low occurrence of microleakage prevents secondary caries.
- Flip-open design enables easy application with only one hand.
- Suction technique delivers drop control result, economizes on the output of HugeBond.

**DA DENTAL
ADVISOR**
Product insights you can trust.

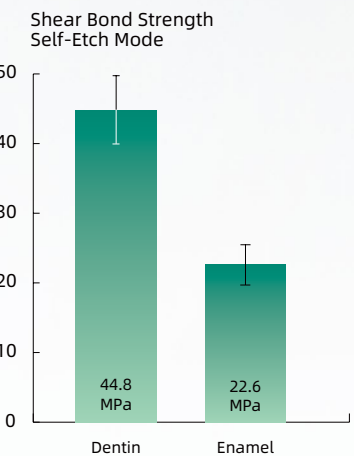


**“EASY TO USE WITH
MANY INDICATIONS.”**

Evaluators' Comments

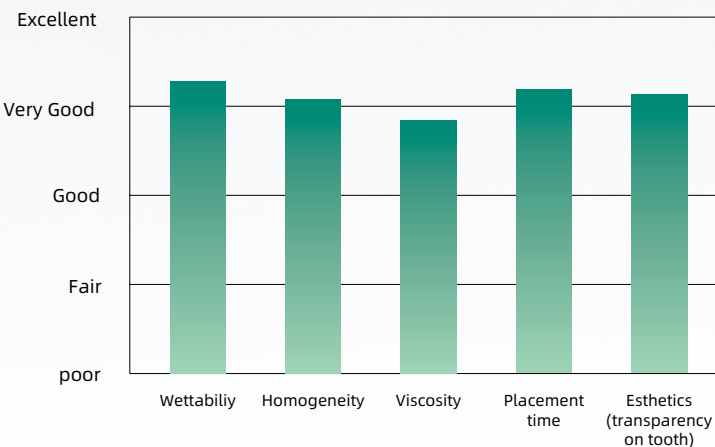
- “The ability to use a single bonding material for all styles and types of composites is very nice.”
- “The viscosity was thicker than most agents. I felt I had great coverage.”
- “The bottle design made it easy to get the amount you needed. Some bottle designs dispense more than what you need or want.”
- “Great consistency and clinical usability.”

DENTAL ADVISOR Biomaterials Test Results:



*Data from Dental Advisor.

Evaluation Summary:



P-Etchant

37% Phosphoric Acid Etching Gel

- **Accurate placement**

Consistent viscosity ensures P-Etchant to stay where you need it. Virtually no residue after a 10-second spray with water.

- **Easy recognition**

P-Etchant features a vibrant blue color, making it easier to distinguish and rinse off without runny mess.

- **Varied specifications**

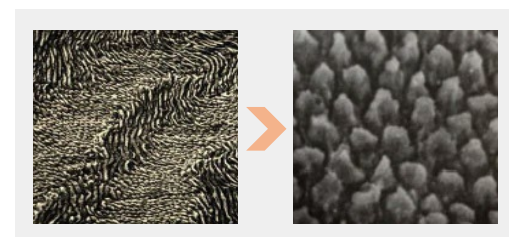
Single 3ml syringe and double 5ml syringes with dispensing tips to meet your various needs. Cost-effective.

Packaging:

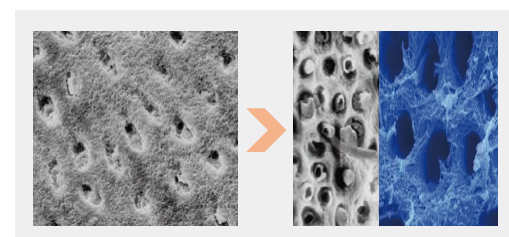
3ml*1 syringe+10 dispensing tips
5ml*2 syringes+20 dispensing tips



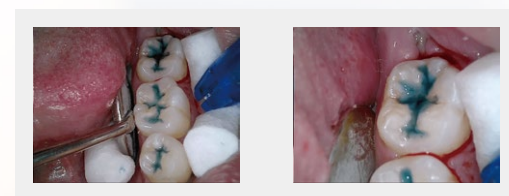
Eliminate surface dirt and fouling from enamel and dentin.



Roughen enamel surface for larger bonding area



Etch dentin to open dentin tubules for easier penetration by adhesive



HF-Etchant

9% Hydrofluoric Acid Etching Gel



HF-Etchant is used for the etching pretreatment of the bonding surface in glass ceramic restorations. With a one-minute application, it roughens the restoration surface and improves adhesion by enhancing mechanical interlocking force, offering a superior ceramic surface preparation with no stain.

- **Apt viscosity**

Special syringe and dispensing tip design ensures easy use with virtually no bubble, while the ideal viscosity guarantees better control and precise placement.

- **Easy recognition**

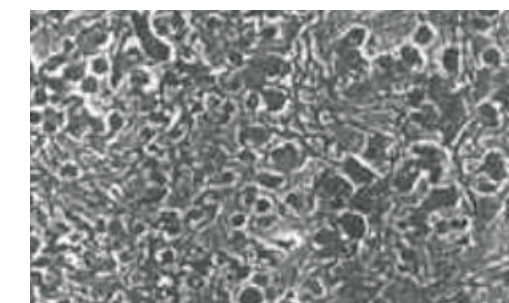
HF-Etchant is vividly colored in orange, allowing for easy identification and rinsing without causing an untidy runoff.

Packaging:

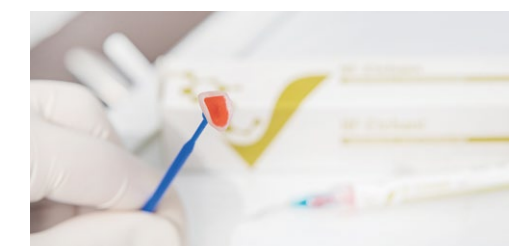
1.2 ml*1 syringe+10 dispensing tips



Glass ceramic surface: before treatment



Glass ceramic surface: after treatment



TopCEM Ceramic Primer

Ceramic Coupling Agent

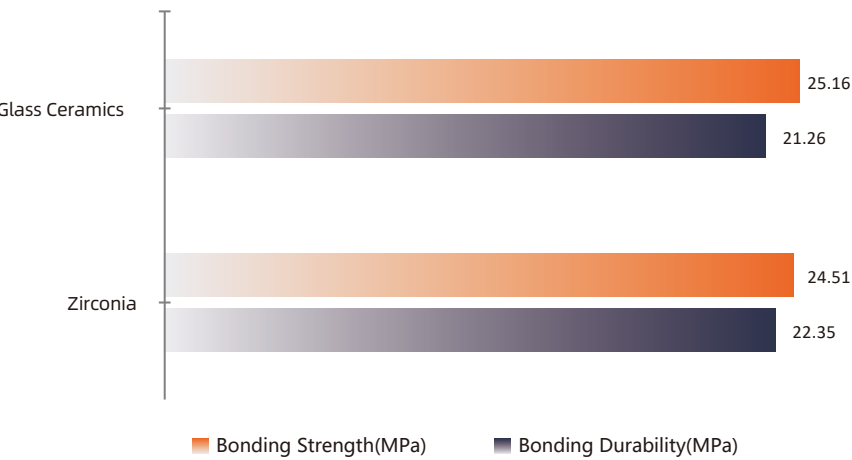


Indication

- Ceramic Coupling Agent serves as priming agent and is used to create a durable adhesion between luting composites and glass/oxide ceramic, metal, composite and fiber-reinforced composite restorations.

Advantages

- Quick solvent evaporation minimizes waiting time.
- Serving as a universal primer, suitable for multiple restoration interfaces.
- Simple operation, easy to apply, compatible with light cured or dual cured adhesive resin cements.
- Significantly improve the bonding strength between the resin cement and the restoration.



*Data from VinciSmile lab.



Packaging

5ml*1 Bottle

TopCEM

Dual Cure Resin Cement

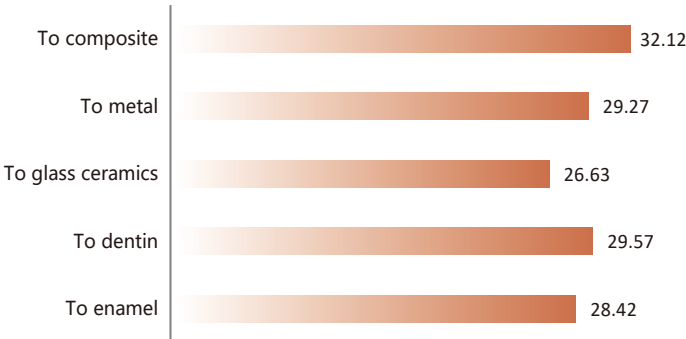


With upgraded stability and consistent versatility, TopCEM DCRC is an all-rounder for all types of restorations and materials cementation.

Product Highlights

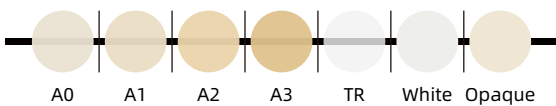
- Dual cure feature offers flexible options
- High flexural strength of over 100 MPa
- Low film thickness, solubility and water absorption
- 3 opacity and 7 shades available , meet individual esthetic needs
- Over 400% radiopacity

Bonding Strength(MPa)



*Data from VinciSmile Lab.

Shade



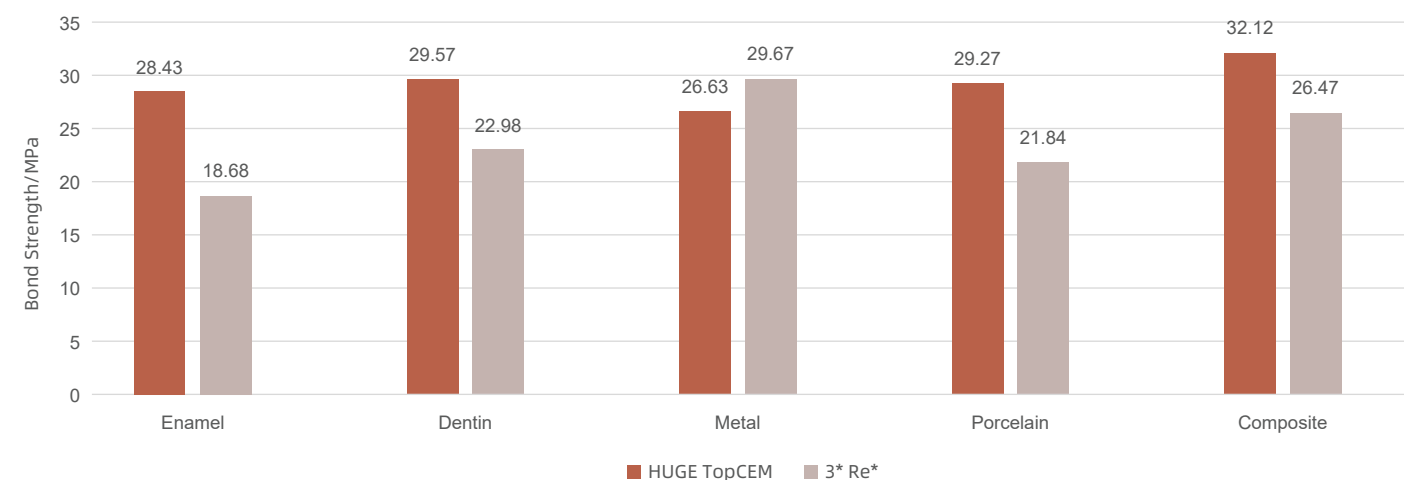
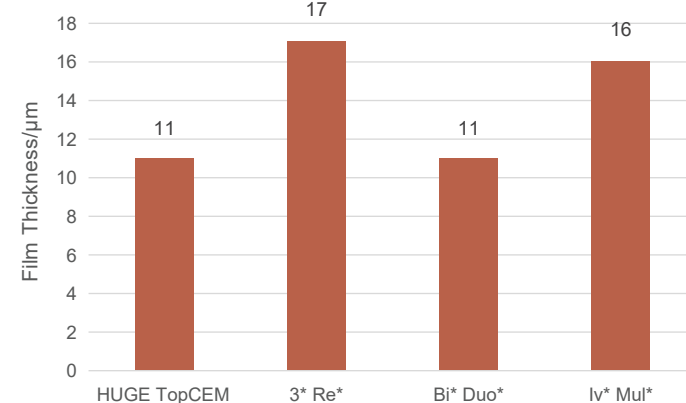
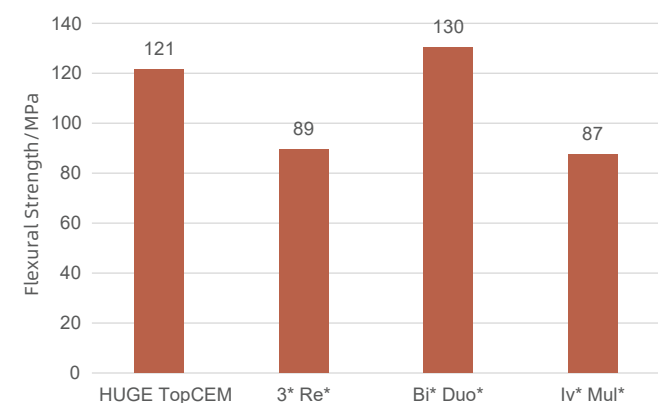
Technical Parameters	TopCEM
Flexural Strength	121MPa
Film thickness	11µm
Water Absorption	16µg/mm³
Solubility	0.6µg/mm³
Working time/23°C	≥2min30sec
Setting time/37°C	2min40sec~ 3min10sec

* Data from VinciSmile lab

TopCEM

Dual Cure Resin Cement

TopCEM Dual Cure Resin Cement has proven highly successful in chairside applications over the years. More recently, its versatility has become increasingly evident in laboratory settings — particularly in the cementation of permanent implant abutments.



*Data from VinciSmile lab.

PTHP TECHNOLOGY

Vetted in a series of long-term trials, VinciSmile rolls out PTHP, an innovative redox self-stabilizing technology, to the whole dentistry.

By controlling the oxidation state, PTHP core technology not only maintains the long-term stability of the physical and chemical properties, but significantly reduces the impact of factors such as high temperature and long storage times.

High Temperature Resistance

PTHP technology mitigates the high temperature sensitivity of the cement, thereby addressing potential premature curing issues during transportation and enhancing the overall product performance stability.

Stable Handling Performance

PTHP technology lowers the requirements for transportation conditions. It ensures color consistency before and after curing and provides long-term stability in working and curing times, finally achieving long-lasting and reliable cementation.

Impressive Color Consistency

The color change in TopCEM DCRC is nearly imperceptible when utilizing PTHP technology, ensuring exceptional color consistency. This product features an amine-free initiator system that offers superior color stability, combined with an enhanced resin matrix for optimal performance. With these advancements, TopCEM DCRC is a reliable choice for achieving consistent and aesthetic results in various applications.



TopCEM Elite System

Universal Adhesive Cementation Solution

Indication

TopCEM Elite System is designed for cementation of all sorts of dental restorations including crowns, bridges, inlays/onlays, veneers, dental posts and other restorations, which are made of metals/alloy, glass ceramic, oxide ceramic (zirconia), metal-ceramic, all-ceramic, composites, and their combinations.

Packaging

6ml*1 bottle	HugeBond Universal FliPro Light Cure Dental Adhesive
8g*1 syringe	TopCEM Dual Cure Resin Cement
5ml*1 bottle	TopCEM Ceramic Primer Ceramic Coupling Agent
3ml*1 syringe	P-Etchant Phosphoric Acid Etching Gel
Accessories:	Intraoral mixers, dispensing tips, mixing pad, micro-brushes



Restoration Pre-treatment

• Porcelain/ glass ceramics restorations



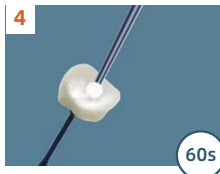
Apply HF-Etchant to the restoration surface. Wait for 60sec.



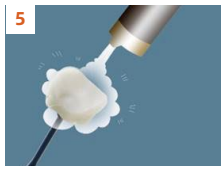
Rinse thoroughly with water for 10sec.



Dry with oil-free air.



Apply TopCEM Ceramic Primer to restoration inner surface. Wait for 60sec.



Dry the primed surface. ***DO NOT TOUCH THE SURFACE WITH YOUR HANDS.**

• Zirconia/ metal restorations



Use aluminum oxide to sandblast bonding surfaces of restorations.



Rinse with water and dry with oil-free air.



Apply HugeBond Universal FliPro and allow it to react for 20 sec.



Dry the restorations with air.

• Composite resin restorations

Follow the same procedure as "Zirconia/ metal restorations" .

Tooth Pre-treatment



Clean the tooth to be cemented, rinse with water.



Gently dry the tooth surface with oil-free air or cotton pellets. Be careful not to over dry.

[OPTIONAL]

Enamel: 20-30s
Dentin: Max 15s

10s

Apply **P-Etchant** to both enamel and dentin surface(Total etch) or to enamel surface only (Selective etch).

Rinse the tooth surface thoroughly with water for 10 seconds.

Gently dry the tooth surface with air.

Bonding Agent Applying

Note: Do not light cure bonding agent on the indirect restoration.



Dry the tooth surface with oil-free air for 2-3sec. Be careful not to over dry.



Apply HugeBond Universal FliPro evenly in two coats for 20 sec.



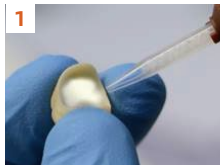
Dry the tooth surface with oil-free air for 10-15sec to remove the solvent.



Light cure the tooth surface for 10sec.

Restoration Cementation

• Crowns, bridges, inlays, onlays, veneers



Place the 1:1 mixed **TopCEM** onto the primed surface of the restoration.



Seat the restoration on the tooth in position.



Light cure the excess cement in the margin for 2sec, remove and clean up.



Light cure each side of the restoration for 10sec, or wait for 4.5 min for self curing.



Finish and polish, adjust the occlusal.

TopCEM Vigor SA

Self-Adhesive Resin Cement



MDP
Monomers

No Primer/
Adhesive Needed

Fluoride
Release

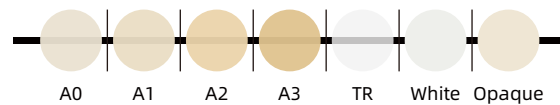
Indication

- Cementation of all-ceramic, composite, and metal crowns, bridges, inlays, onlays, dental posts; 2-3-unit Maryland bridges and 3-unit inlay/onlay bridges (contraindicated for patients with bruxism or periodontitis).
- Cementation of fiber posts.
- Cementation of all-ceramic, composite, and metal restorations on implant abutments.

Advantages

- Provides a time-saving one-step cementation solution, no need of adhesive
- Ultra-low film thickness about 8µm, ensures strong luting result
- High flexural strength over 100Mpa
- Low water absorption and solubility, delivers a long-lasting restorative result.
- Perfect viscosity for accurate placement, without runny mess in patients mouth
- 7 shades and 3 opacities provide aesthetics tooth-like restorative result.

Shade

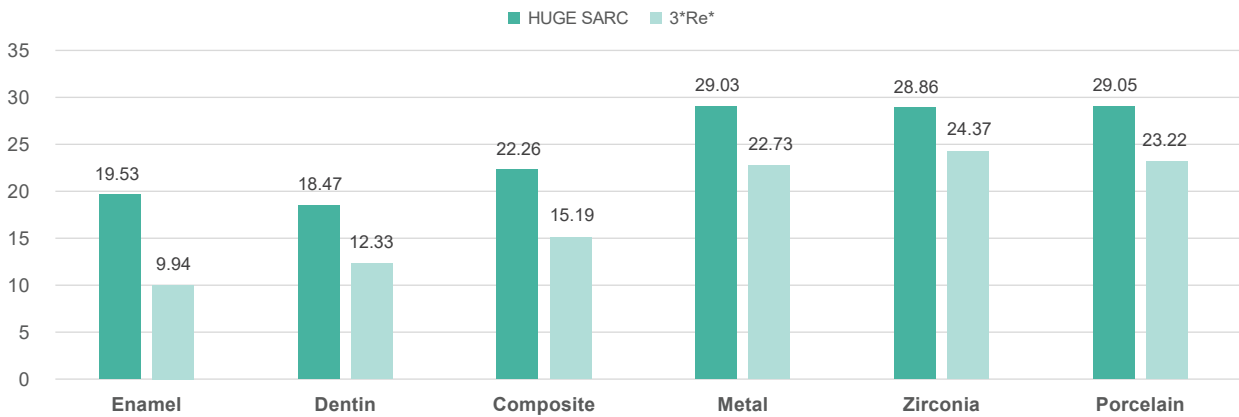


Packaging

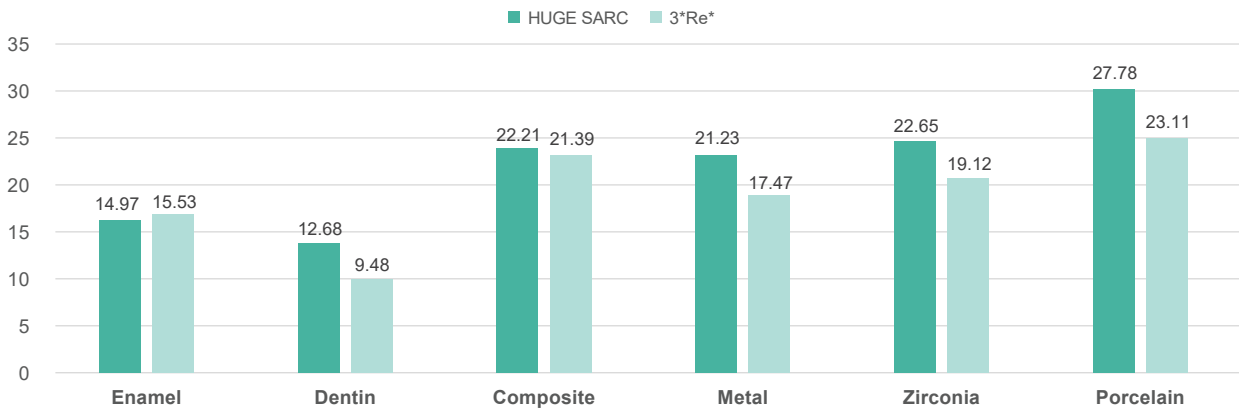
8g* 1 Syringe

Technical Parameters	TopCEM Vigor SA
Flexural Strength	113.6 MPa
Film Thickness	8.4 µm
Water Absorption	27.8 µg/mm ³
Solubility	0.6 µg/mm ³
Working Time	≥2min
Curing Time (self curing)	2min30sec-3min10sec

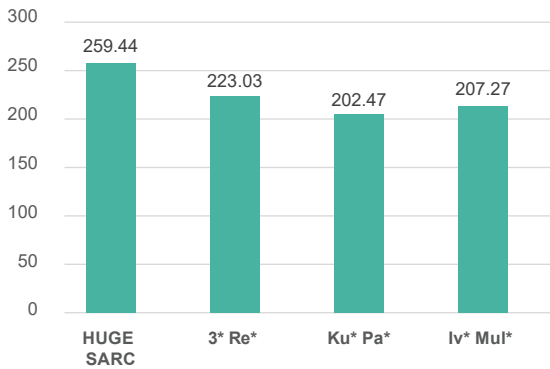
Bond Strength to Different Substrates (Light Cure)/MPa



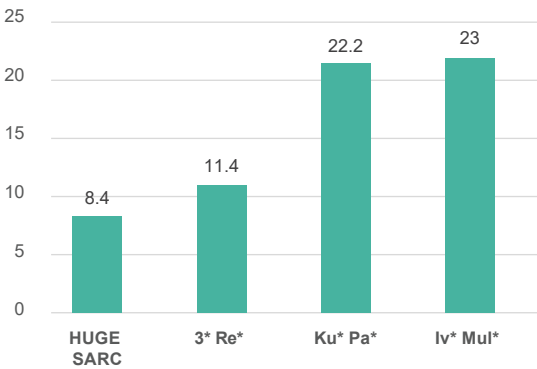
Bond Strength to Different Substrates (Self Cure)/MPa



Compressive Strength/MPa



Film Thickness/µm



* Data from VinciSmile Lab

TopCEM-RMGI

Resin Modified Glass Ionomer
Cement-Luting



Indication

- Cementation of porcelain-fused-to-metal (PFM) crowns and bridges
- Cementation of metal crowns, inlays and onlays
- All-zirconia strengthened core ceramic restorations
- Cementation of resin inlays, onlays, crowns and bridges
- Final cementation PFMS, metal crowns or all-zirconia strengthened core ceramic restorations to implant abutments

Simplified Operation

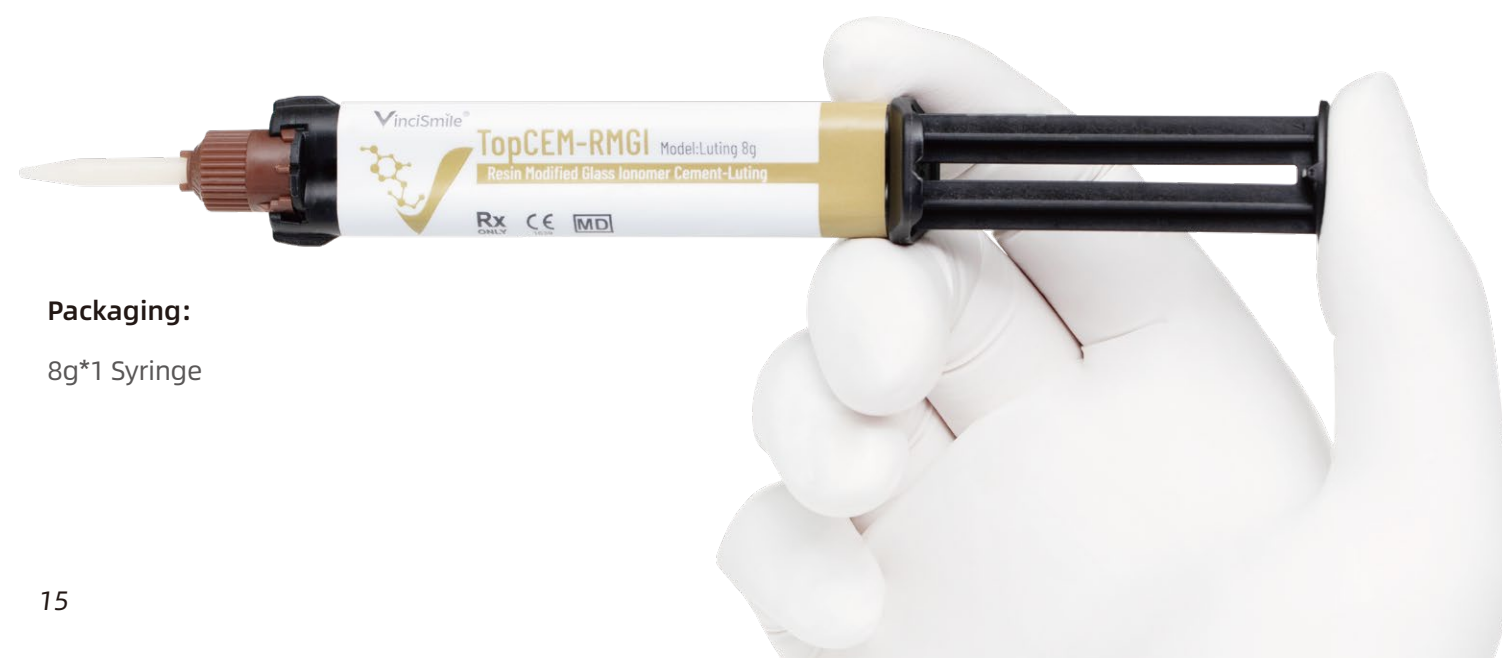
- No more need for adhesives, primers or conditioners.
- Tack curing ensures a quick and easy excess cement clean-up.
- Ideal consistency created for accurate placement.

Reliable Cementation

- Low film thickness for a marginal fit.
- High strengths delivers an ideal long-lasting cementation performance.

Functional Result

- Continuous fluoride release prevents secondary caries.



Packaging:

8g*1 Syringe

TopCEM

• Veneer Cement
Light Cure Veneer Cement

• Try-In
Veneer Try-in Gel

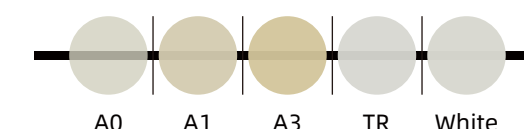
Indication

- TopCEM Veneer: Used for permanent cementation of veneer made from materials of porcelain/ce-ramic and composites.
- TopCEM Try-In: Used to evaluate the shade and the matching of the restoration prior to permanent cementation.

Advantages

- 5 shades and 3 opacity options, satisfy all needs of esthetics, high translucency and shades covering.
- Light curing ensures colour stability.
- Impressive radiopacity, X-ray radiation resistance could be over 400%.
- High bonding strength, low water absorption and solubility, and impressive marginal fitness.
- Additional try-in gel ensures appropriate cement shade to fit in natural teeth.

Shade



Packaging:

TopCEM Veneer: 2.5g*1 syringe+10 dispensing tips

TopCEM Try-in: 2g*1 syringe+10 dispensing tips



TopCEM Veneer System

Veneer Cementation Solution

Indication

TopCEM Veneer System is designed for permanent cementation of veneer made from materials of porcelain/ceramic and composites.

Packaging

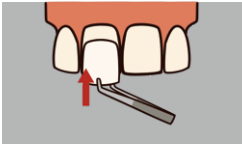
6ml*1 bottle	HugeBond Universal FliPro Light Cure Dental Adhesive
2.5g*5 syringes	TopCEM-Veneer Light Cure Veneer Cement
2g*5 syringes	TopCEM-Try In Veneer Try-In Gel
5ml*1 bottle	TopCEM Ceramic Primer Ceramic Coupling Agent
3ml*1 syringe	P-Etchant Phosphoric Acid Etching Gel
1.2ml*1 syringe	HF-Etchant Hydrofluoric Acid Etching Gel
Accessories	Dispensing tips, mixing pad, micro-brushes



01 Veneer Try In



Apply Try-in gel to veneer inner face.



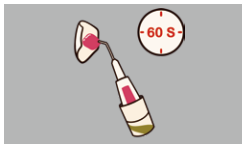
Carefully seat the veneer without pressure.



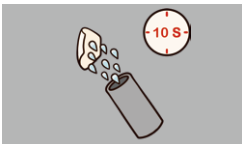
Rinse the veneer thoroughly, then dry with air.

02 Pretreatment of Veneer Restoration

• Porcelain/ glass ceramic veneers



Apply a layer of HF-Etchant, wait for 60sec.



Rinse thoroughly for 10sec, then dry with air.

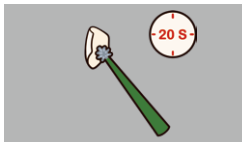


Apply two layers of TopCEM Ceramic Primer to veneer inner face, and wait for 60sec.



Dry the restoration with air.

• Composite resin veneers



Apply HugeBond Universal FliPro and wait for 20sec.



Dry the restoration with air for 10sec. *DO NOT LIGHT CURE.

03 Pretreatment of Teeth



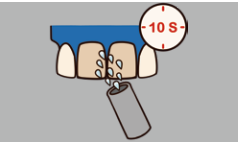
Rinse the teeth thoroughly, then dry with air.



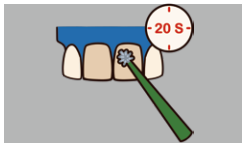
Isolate the teeth with rubber dam.



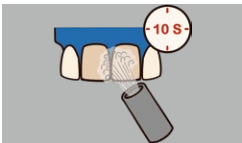
Apply P-Etchant to teeth surface.



Rinse the etched teeth for 10sec, then dry with air.

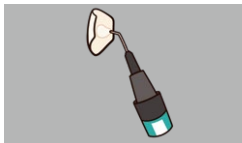


Apply HugeBond Universal FliPro to the teeth evenly, and rub it in for 20sec to ensure a shiny surface,

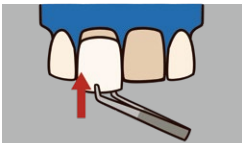


Dry with air for 10sec to remove the solvent. *DO NOT LIGHT CURE.

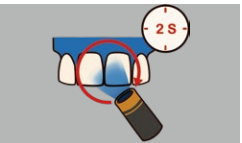
04 Veneer Cementation



Apply TopCEM-Veneer Cement.



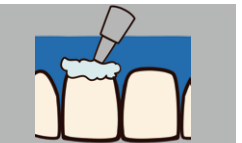
Seat the veneer in position.



Tack cure excess cement in the margin for 2sec.



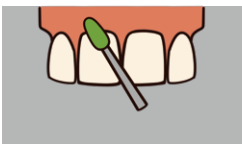
Remove and clean the excess cement.



Apply glycerin gel to the margins before final curing.



Final cure the cement for 20sec.



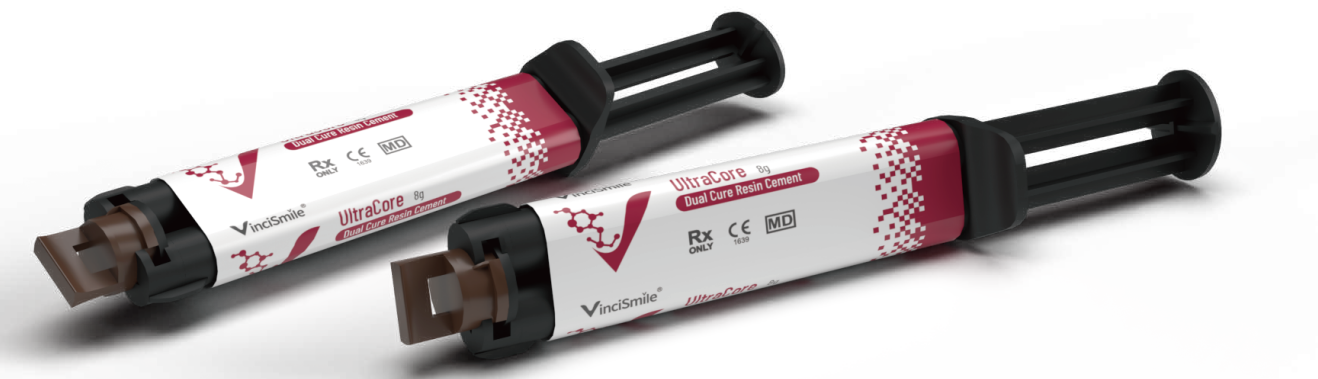
Clean up and polish.



Apply Pro Shield Fluor Protector to the teeth for postoperative protection.

UltraCore

Core Build-up Material



UltraCore, a real-dentin-like core build-up material, offers you utmost restorative result and streamlined operation. Two curing methods, seven shades and impressive physical properties provide excellent foundation for the reconstruction of vital and non-vital teeth with part or most of the clinical crown missing. And far beyond your expectations, UltraCore is more than a core build-up material.....

3 Indications with just 1 product

- ✓ Core build-up
- ✓ Root post cementation
- ✓ Permanent crown&bridge cementation

Properties	UltraCore
Flexural Strength/ MPa	132
Compressive Strength/ MPa	344
Tensile Strength/ MPa	55
Film Thickness/ μm	12.7
Radiopacity/ %AI	400

*Data from VinciSmile lab.

Why choose UltraCore?

- Superior compressive and flexural strength

UltraCore bonds securely and effectively with dental hard tissue and root post, shows a dentin-like hardness and delivers a long-lasting restoration.

- Cuts just like natural dentin

UltraCore feels just like the real dentin, and ensures groove-free preparations without any undercuts. It presents ideal conditions for precise crown cementation.

- Dual curing techniques provide you easier application

Dual curing techniques deliver optimum flexibility in your operation. There's no need to worry about the situation in the root canal, UltraCore will be set in at most 4 minutes. And light curing enables a more efficient procedure.

- Artistic shade system satisfies all your esthetic needs

UltraCore provides you versatile shade options for core-buildup. If you pursue the ultimate natural esthetic look, artistic dentin shades are your ideal choice. And if you need a special shade to differentiate with natural tooth structure, you could also find multiple shades.

Excellent Operation Experience with UltraCore

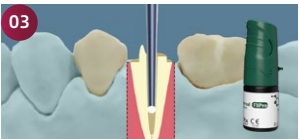
·Root post cementation



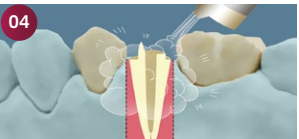
After sterilizing root posts, dry with air.



Apply HugeBond Universal, and dry with water-free, oil-free air.



After sterilizing root canal, apply HugeBond Universal to the canal.



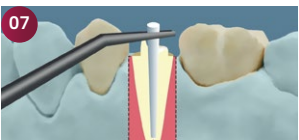
Clean residual excess bonding agent, then air-dry.



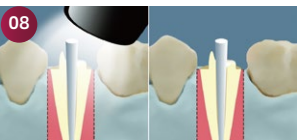
Light cure for 10 sec.



Inject UltraCore into root canal with an oral tip.

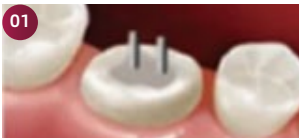


Place root post with certain pressure.



Remove excess material, and light cure 40 sec, or wait 4.5 min for self-curing.

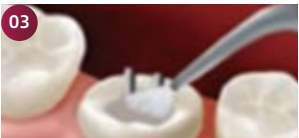
·Core Build-up



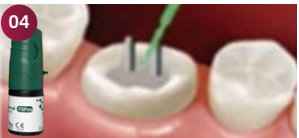
Post set up.



Etching with P-Etchant.



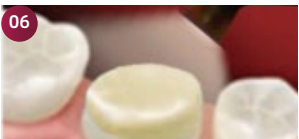
Clean and dry.



Apply HugeBond Universal to the tooth, dry and light cure.



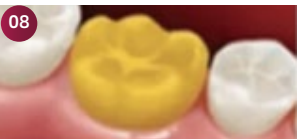
Core build-up with UltraCore.



Light cure for 20 sec, or self-cure for 4.5 min.



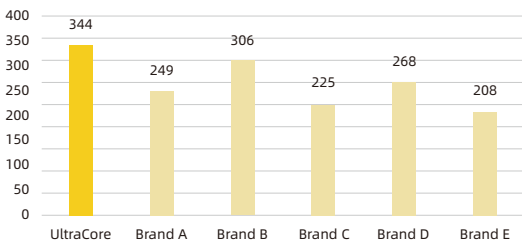
Polish and shape for further restoration procedures.



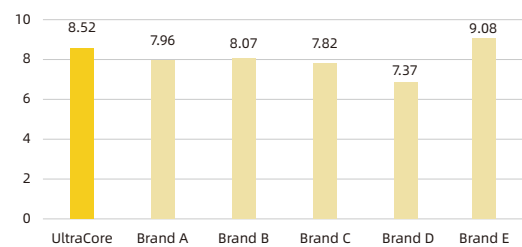
Cementation of crown or bridges.

Optimal Material for Core Build-ups

Compressive Strength/MPa



Flexural Modulus/ GPa



*Data from VinciSmile lab.



TrusFIL

Universal Restorative Composite

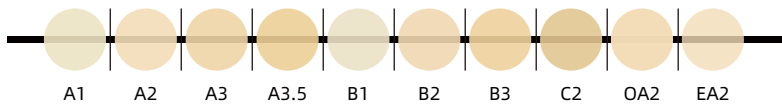


TrusFIL is a visible light-curing dental restorative material. This restorative material stands out among composites due to its unexpected strength and polish retention imparted by VinciSmile nanotechnology.

What makes TrusFIL stand out:

1. VinciSmile nanotechnology strikes a balance between high esthetic results and sufficient flexural and compressive strength by offering special nanostructured fillers (75%-80% by weight and 53%-57% by volume).
2. Upgraded formula ensures brilliant non-stickiness for convenient handling without compromising strength. New syringe design equips you with easier flip-open experience and better control of amount.
3. TrusFIL delivers exceptional performance with multiple indications and two delivery specifications, both syringes and capsules (*Capsule package coming soon).
4. 10 shades available to meet your esthetic needs. Head to TrusFIL X-Blend for a hassle-free color-matching experience.

Shades



Indications:

- Direct restoration of anterior and posterior (including the occlusal surface);
- Post fabrication;
- Splintage;
- Fabrication of indirect restorations.

Curing Time:

- Light shades (A1, A2, B1, B2):
20s (600~1000 mW/cm²)
10s (>1000 mW/cm²)
- Dark shade (A3, A3.5, B3, C2, OA2, EA2):
40s (600~1000 mW/cm²)
20s (>1000 mW/cm²).

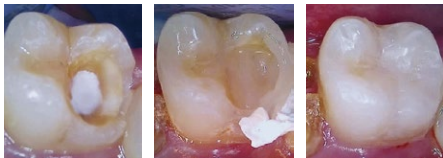
Specifications:

4g*1 syringe

Technical Parameters	TrusFIL Universal
Flexural Strength	140 MPa
Compressive Strength	321 MPa
Water Sorption	17 mg/mm ³
Water Solubility	0.7 mg/mm ³
Polymerization Shrinkage	1.06 %
Curing Depth	2 mm(A1, A2, B1, B2)
	1.5 mm (A3, A3.5, B3, C2, C4, OA2, BL)

* Data from VinciSmile lab

Class II restoration



Class IV restoration



* Photo courtesy of Dr. Cindy

DA DENTAL ADVISOR
Product insights you can trust.



To achieve the best performance, we recommend you to use HugeBond Universal Flipro and P-Etchant for pretreatment.

TrusFIL-Flow

Flowable Composite Restorative

Tiny tips for accurate placement

TrusFIL-Flow enables you to achieve accurate composite placement with the attached tiny tips, even in the deep cavity, you could dispense the composite down on uneven bottom as base.

Easy to push-in and comfortable to hold

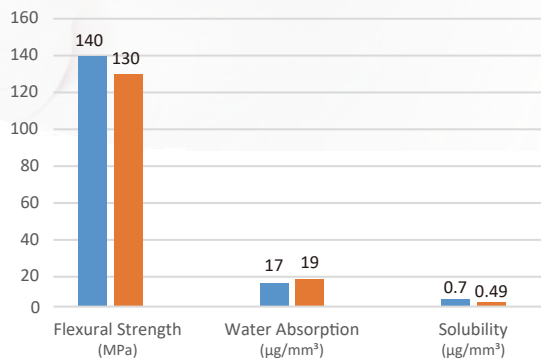
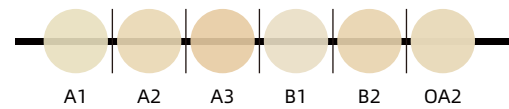
Ergonomic design of plunger and bottom plate simplifies application process, and make you feel better and much easier in operation.

No bubbles and runny mess

An innovative design effectively reduces bubbles while dispensing the composite, offers you more control in your practice

Featuring multi-shades, satisfying viscosity, and self-leveling technology, **TrusFIL-Flow** is an ideal injectable, can be applied as base/liner to create a perfect plane for subsequent restoration. The overall syringe design virtually eliminates bubbles and runny mess during dispensing. Filler loading: 60%-65% by weight, 45%-50% by volume.

Shades



*Data from VinciSmile Lab

TrusFIL Restoration System

Universal Composite Restoration Solution

A handy direct restoration kit that combines packable and flowable restoratives for your restorative routine.

Indication

TrusFIL Restorative System is a highly aligned direct restorative system indicated for:

- Direct anterior and posterior restorations (including occlusal surfaces);
- Core Build-ups;
- Splinting;
- Indirect restorations including inlays, onlays and veneers.

Packaging

6ml*1 bottle	HugeBond Universal FliPro Light Cure Dental Adhesive
4g*4 syringes	TrusFIL Universal Composite Restorative
2g*2 syringes	TrusFIL-Flow Flowable Composite Restorative
3ml*1 syringe	P-Etchant Phosphoric Acid Etching Gel
Accessories	Dispensing tips, mixing pad, micro-brushes



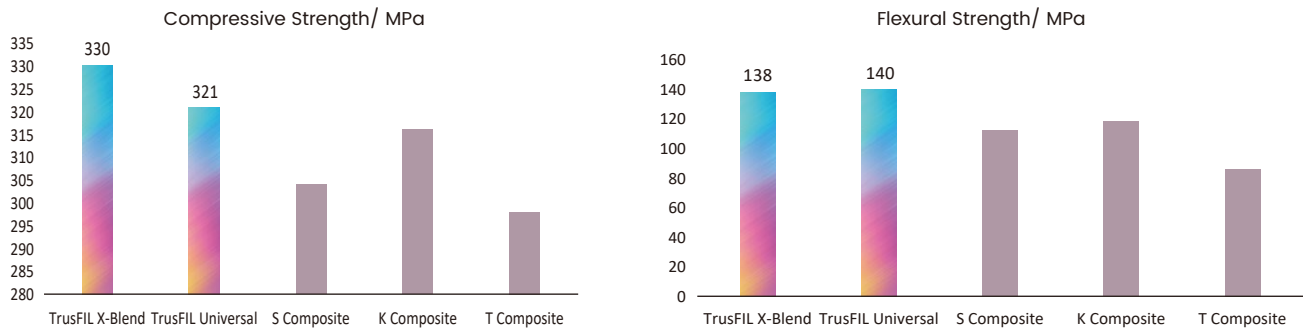
TrusFIL X-Blend

Universal Composite Restorative

TrusFIL X-Blend is a one-shade universal composite restorative for enhanced productivity, streamlined inventory control and minimized material waste. Due to TrusFIL leading filler technology, it delivers an amazing shade-matching magic without compromising strength.

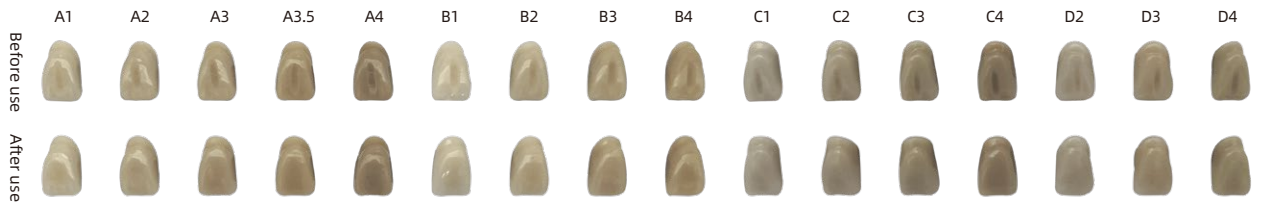
Indications:

- ✓ Direct restorations for anterior and posterior teeth and occlusal surfaces
- ✓ Indirect restorations including inlays, onlays and veneers
- ✓ Core Build-ups
- ✓ Splinting



Compared to TrusFIL Universal, TrusFIL X-Blend shows a quite similar performance in practice, and provides an easier operation.

Perfect Aesthetic Results



Flexural Strength	138 Mpa
Polymerization shrinkage	1.06%
Elastic Modulus	11.5 GPa
Water Absorption	18.2 µg/mm³
Solubility	0.5 µg/mm³
Depth of Curing	3.5 mm

*Data from VinciSmile lab.



Proseal F

Enamel Coating Resin

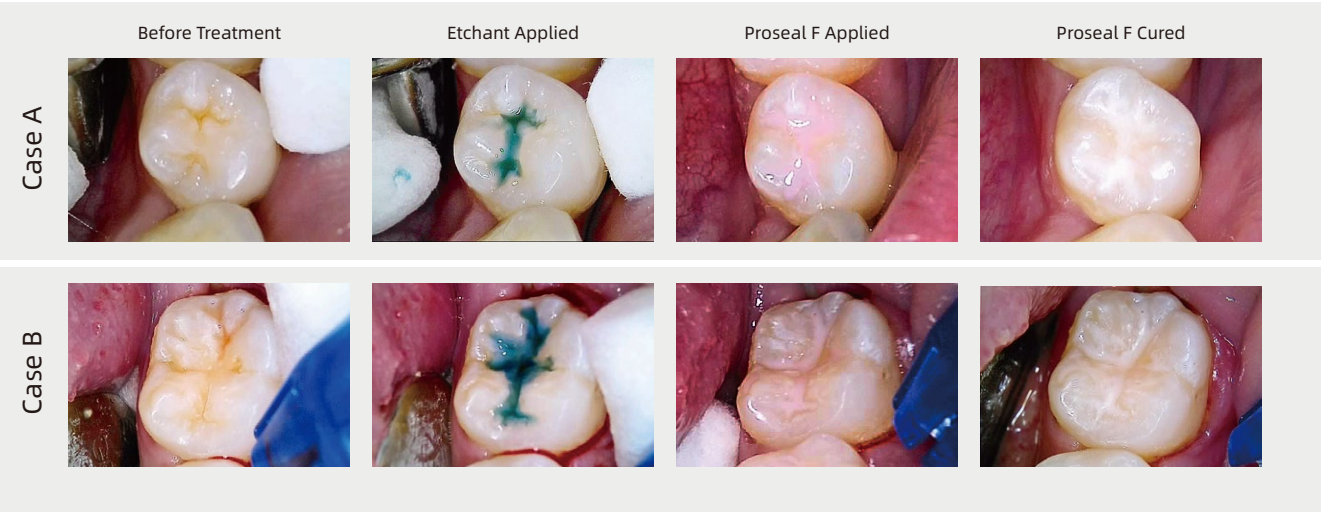


- Upgraded Tip Design**
- ✓ Minimizes Leakage
 - ✓ Virtually No Bubbles
 - ✓ Ensures Accurate Application

Packaging

1.5g*1 Syringe
10 Dispensing Tips

Offers excellent stain resistance



Compressive strength (MPa)	325.70
Flexural strength (MPa)	83.71 (Average Value)
Light intensity (mW/cm ²) for curing	> 800
Wavelength (nm) for curing	400-500
Depth of cure (mm)	3.7
Shear bonding strength to etched enamel (MPa)	19.57 (Average Value)

*Data from VinciSmile lab.



Pro Shield

Fluor Protector



- High-Efficiency Fluoride Release
- Safe Natural Resin Formula
- Stable and Even Fluoride Suspension
- Effective Relief of Tooth Hypersensitivity
- Pleasant Flavor for Better Patient Experience
- Clinician-Friendly Packaging Design

How to use the unit-dose packaging?

1. Peel off the sealing film of the applicator brush and take it out.
2. Peel off the varnish sealing film and the bottom release film.
3. Stick the varnish container in a convenient position.



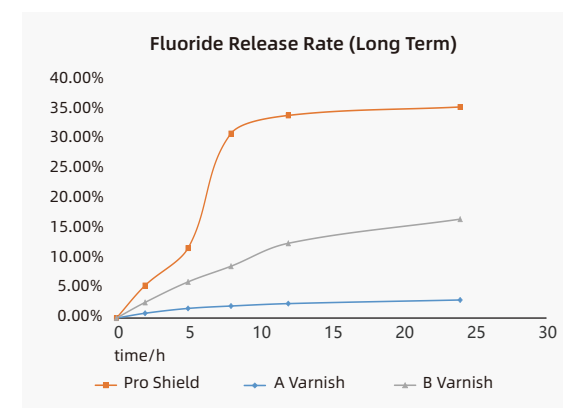
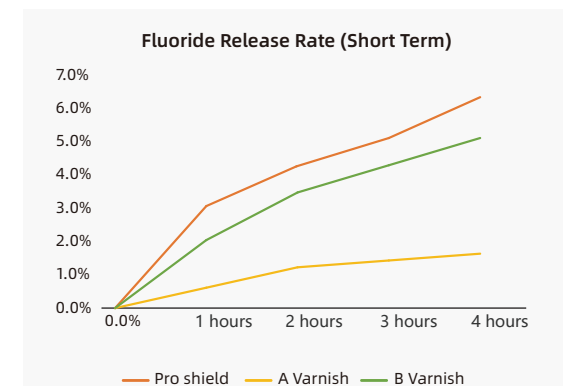
Indications

- Treating hypersensitive teeth

Packaging

- 10g/tube
- 0.4g*50/box

High Fluoride Release Capability Suitable for Kids and Adults



*Data from VinciSmile Lab

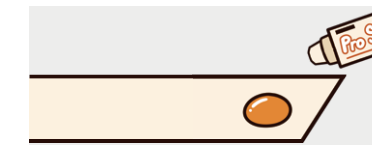
Excellent Operation Experience with Pro shield



1. Make sure the areas to be treated are clean



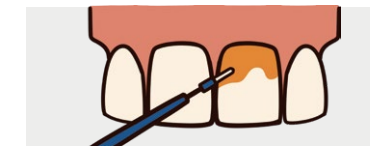
2. Remove excess saliva with triple syringe or cotton pellets



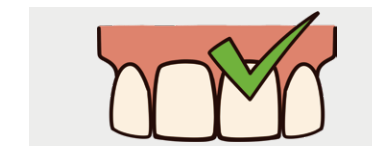
3. For 10g tube:



4. For 0.4g unit-dose:



5. Use the microbrush to apply a thin layer to the tooth surface



6. Forms a thin film on the tooth surface

Clinical application suggestions:

1. Recommended dosage:

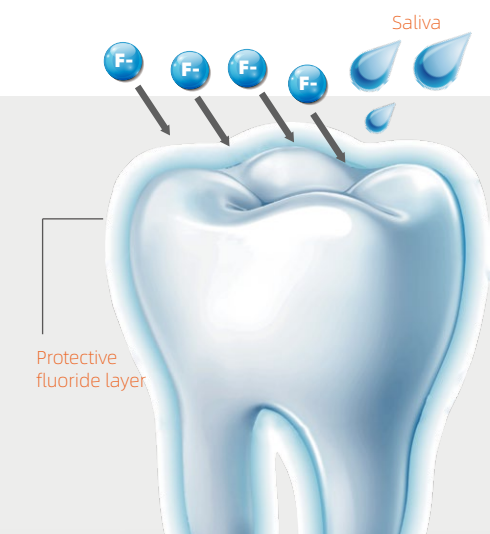
Deciduous dentition $\leq 0.25g$ (5.65mg fluoride)
Mixed dentition $\leq 0.4g$ (9.04mg fluoride)
Permanent dentition $\leq 0.75g$ (16.95mg fluoride)

2. Frequency of use:

Use once every **3-6 months**.

3. Precautions after use:

After using this product, do not brush the teeth, chew food, or drink hot drinks and alcoholic products (beverages, mouthwash, etc.) within **4 hours**.





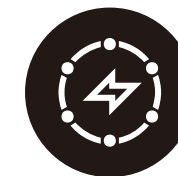
Dental Impression Materials



A-Silicone with excellent stability, strength, and biocompatibility



High-accuracy impression formulations



Diverse viscosities and curing speeds



Enhanced experience for special indications

PERFIT Putty

Elastomeric Impression Material



Indications

- For crown, bridge, inlay, and onlay impressions.
- Recommended for use with wash material in two-step impression technique.

Advantages

- Good linear dimensional stability.
- Excellent recovery after deformation.
- High tear strength and tensile strength.

Packaging

Standard : 400 g × 2 base/catalyst + 2 measuring spoons
 Set B: 400 g × 2 putty base/catalyst + 2 measuring spoons + 50 ml × 1 light body cartridge

Technical Parameter		Putty	
Type		Normal Set	Fast Set
Mixing Time		30s	30s
Working Time		1min30s	1min15s
Setting Time in Oral Cavity		3min00s	2min30s
Elastic Recovery		>99.5%	
Dimensional Change Rate		<0.2%	
Hardness Shore A		≈67	
Color		Purple	
Shelf Life		3 Years	

*Data from VinciSmile lab.

PERFIT Heavy Body

Elastomeric Impression Material



Indications

- For crown, bridge, inlay, onlay, implant, orthodontic, and full denture impressions.
- Recommended for use with wash material in one-step or two-step impression technique.

Advantages

- Easy and efficient operation.
- Good mixing quality, avoid bubbles.
- High precision and dimensional stability.
- High tear strength and tensile strength.
- Especially suitable for border molding.



Dispenser-Mix



Auto-Mix

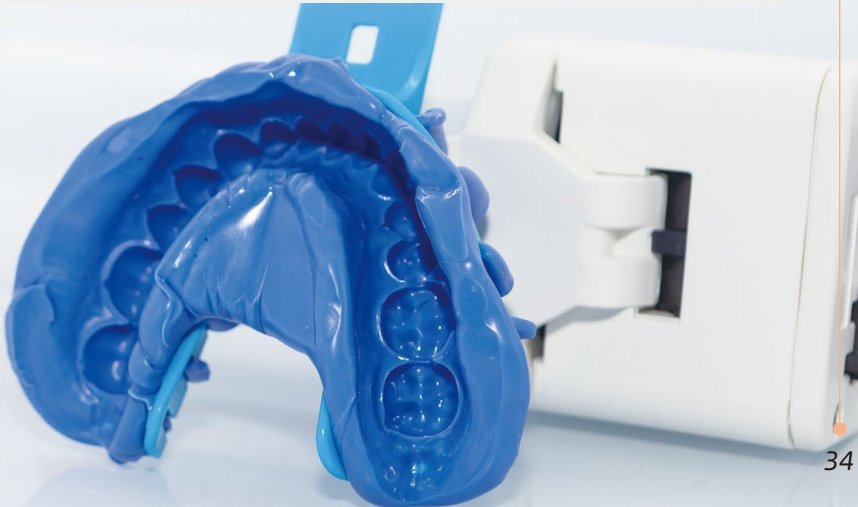
Technical Parameter	Heavy Body/Dispenser-Mix		Heavy Body/Auto-Mix
Type	Normal Set	Normal Set	Fast Set
Working Time	2min00s	1min30s	1min30s
Setting Time in Oral Cavity	3min30s	3min00s	3min00s
Elastic Recovery	>99.5%		
Linear Dimensional Change (24 h)	<0.2%		
Shore A Hardness (24 h)	≈68		
Color	Blue		Green
Shelf Life	3 Years		

*Data from VinciSmile lab.

Packaging

Dispenser-Mix Type:
 Standard: 50 ml × 2 cartridges
 Kit: 50 ml × 2 cartridges + 6 mixers

Auto-Mix Type:
 Standard: 380 ml × 1 cartridge



PERFIT Regular Body-Transparent

Elastomeric Impression Material

Indications

- For Clinical Application:
 1. Two-step impression technique with wash materials
 2. Light-curing guide for
 - a. Mock up restoration
 - b. Bonding of orthodontic brackets
 - c. Occlusal stamp for composite restorations
- For Lab Application:
 - Composite injection moulding technique

Packaging

50 ml × 2 cartridges



Extreme Transparency



Ideal Rigidity



No Bubbles



High Aesthetic Results

Technical Parameter	Regular Body
Working Time	1min30s
Setting Time in Oral Cavity	3min00s
Shore A Hardness (24 h)	62
Color	Transparent
Shelf Life	3 Years

*Data from VinciSmile lab.



Outstanding Transparency Performance

Compared with other brands, PERFIT shows superior transparency with no bubbles, enabling clearer light-curing guidance and more precise application.



VinciSmile Brand A Brand B Brand C

Clinical Application Cases

1. Flowable injection technique (Mock-up restoration)



1. Prepare teeth and make the plaster model



2. Finish restoration with wax on plaster model



3. Apply Regular Body onto the plaster model



4. Use Regular Body to make transparent matrix



5. Fill the space with light-curing resins



6. Light cure the resin materials



7. Finish restoration after polishing



TrusFIL-Flow Flowable Composite Restorative

2. Occlusal stamp for composite restorations



1. Use Regular Body to make transparent stamp



2. Prepare teeth, etch and apply adhesive



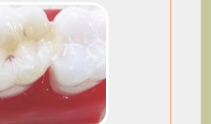
3. Fill with flowable resin or bulk resin



4. Press with the transparent stamp



5. Light cure the resin materials



6. Finish restoration after polishing

3. Indirect method of transferring orthodontic brackets



1. Bond the brackets to the plaster model temporarily



2. Apply Regular Body to make transparent guide



3. Remove temporary adhesive from brackets



4. Prepare teeth, etch and apply adhesive



5. Apply the transparent matrix. Light cure the adhesive



6. Complete one-time transfer brackets

PERFIT Monophase

Elastomeric Impression Material

Indications

- For crown, bridge, inlay, onlay and implant impressions.
- Recommended for one-step impression technique.

Advantages

- High hydrophilicity and thixotropy
- Optimal flow for high impression accuracy
- Excellent handling properties, easy to use
- High tear and tensile strength
- Good dimensional stability

Packaging

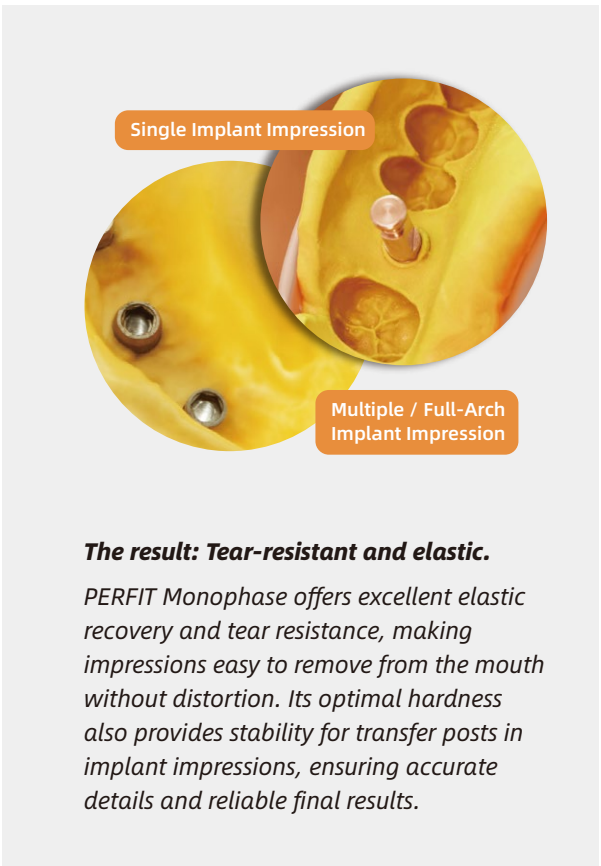
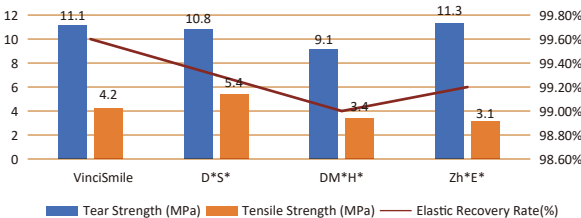
Standard : 50 ml × 2 cartridges
Kit : 50 ml × 2 cartridges + 6 mixers

Technical Parameter	Monophase
Type	Normal Set
Working Time	2min00s
Setting Time in Oral Cavity	3min30s
Elastic Recovery	> 99.5%
Dimensional Change Rate	< 0.2%
Shore A Hardness (24 h)	≈60
Color	Light Yellow
Shelf Life	3 Years

*Data from VinciSmile Lab.



Key Mechanical Properties Comparison



PERFIT Light Body

Elastomeric Impression Material

Indications

- For crown, bridge, inlay, onlay, implant, orthodontic, and full denture impressions.
- Recommended for use with tray material in two-step or one-step (simultaneous) impression technique.

Advantages

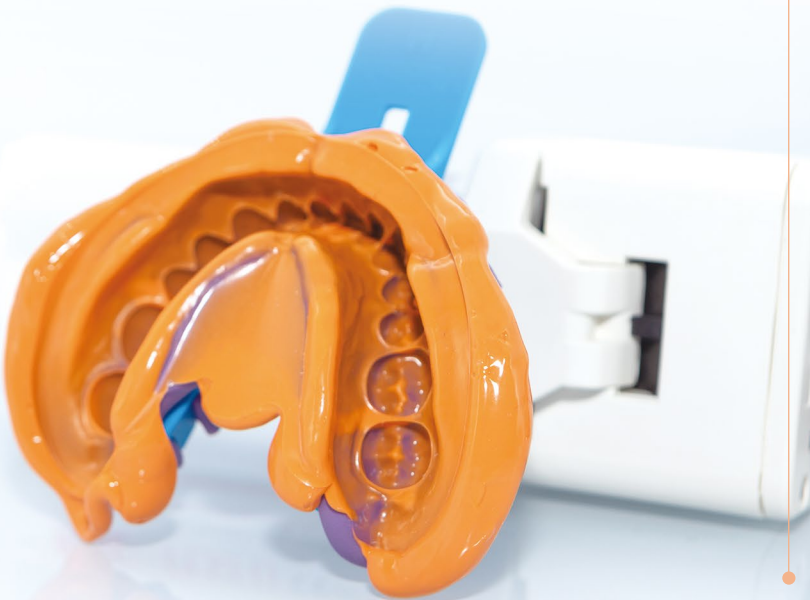
- Extraordinary flow property and stability.
- High hydrophilicity and outstanding thixotropy.
- Strong ability to reproduce details.

Technical Parameter	Light Body	
Type	Normal Set	Fast Set
Working Time	2min15s	1min30s
Setting Time in Oral Cavity	3min30s	2min30s
Elastic Recovery	>99.5%	
Linear Dimensional Change (24 h)	<0.2%	
Shore A Hardness (24 h)	≈56	
Color	Orange	
Shelf Life	3 Years	

*Data from VinciSmile lab.

Packaging

Standard : 50 ml × 2 cartridges
Kit : 50 ml × 2 cartridges + 12 mixers + 12 oral tips



PERFIT Super Light Body

Elastomeric Impression Material

Indications

- Especially recommended for full denture impressions.
- Recommended for use with tray material in two-step impression technique.

Advantages

- Higher flowability than Light Body with excellent stability.
- High tear strength and tensile strength.
- Superior accuracy for precise detail reproduction.

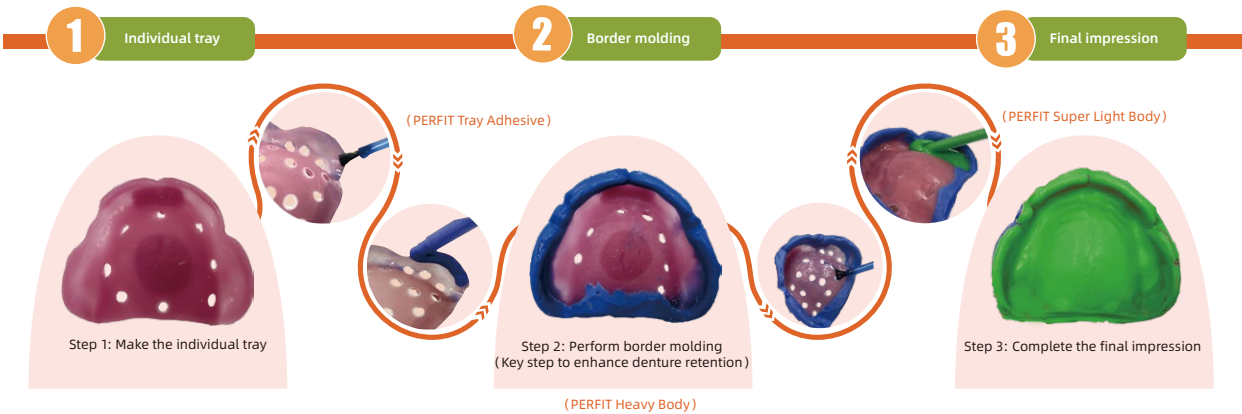


Packaging

Standard : 50 ml × 2 cartridges
Kit : 50 ml × 2 cartridges + 12 mixers + 12 oral tips

Technical Parameter	Super Light Body
Type	Normal Set
Working Time	2min15s
Setting Time In Oral Cavity	3min30s
Elastic Recovery	>99.5%
Linear Dimensional Change (24 h)	<0.2%
Shore A Hardness (24 h)	≈56
Color	Dark Green
Shelf Life	3 Years

*Data from VinciSmile lab.



PERFIT Bite Registration

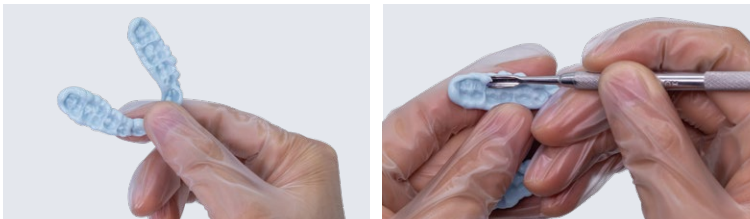
A-Silicone for Bite Registration

Indications

- For making bite registration.

Advantages

- Accurate bite record with high hardness(90 A).
- High rigidity and easy trimming.
- Excellent dimensional stability.
- Whipped-cream-like consistency.
- Scannable for digital workflows.



Technical Parameter	A Silicone for Bite Registration	
Type	Normal Set	Fast Set
Working Time	30s	12s
Setting Time In Oral Cavity	1min30s	45s
Shore A Hardness (24 h)	90	
Color	Light Blue	
Shelf Life	2 Years	

*Data from VinciSmile lab.

Packaging

Standard : 50 mL × 2 cartridges
Kit : 50 mL × 2 cartridges + 6 mixers



PERFIT Tray Adhesive

Impression Accessory

Indications

- To offer reliable adhesion between impression tray and silicone impression material.

Advantages

- Suitable for A-Silicone and C-Silicone
- Easy to apply and handle
- Short setting time after application
- Blue colour visual control

Operation Guide



Apply a uniform layer of PERFIT Tray Adhesive onto the tray, dry for at least 3 minutes, then apply the silicone impression material.



10ml/bottle

Drying Time

3 minutes

Impression Kit

Elastomeric Impression Material

Versatile Solutions

Widely used in on-line oral treatment like invisible orthodontic, teeth beauty and sports mouthguard.

Standard Package

- 25 g × 4 putty base/catalyst
- 2 upper trays + 2 lower trays
- 1 instruction for use



Customized Options



Full Solution Provider

Integrated product supply



Rich Customized Options

Diversified product configuration combination

















Reliable Quality

Same material with PERFIT



Overview of PERFIT Impression Materials

PERFIT	Consistency	Delivery System	Type of Setting		Hardness Shore A
			Normal Set	Fast Set	
TRAY MATERIALS					
PERFIT Putty	Type 0		■	■	67
PERFIT Heavy Body Dispenser-Mix	Type 1		■	■	68
PERFIT Heavy Body Auto-Mix	Type 1			■	68
PERFIT Regular Body-Transparent	Type 2			■	62
MONOPHASE					
PERFIT Monophase	Type 2		■		60
WASH MATERIALS					
PERFIT Light Body	Type 3		■	■	56
PERFIT Super Light Body	Type 3		■		56
BITE REGISTRATION					
PERFIT Bite Registration	/		■	■	90
ACCESSORIES			SPECIFICATION		
PERFIT Tray Adhesive	Accessory		10ML		
Grey Mixing Tips	Accessory		6+6 PCS		50 PCS
White Mixing Tips	Accessory		6 PCS		50 PCS
Silicone Cut	Accessory		1PC		
Dispensing Gun	Accessory		1 PC		
Automatic Mixer	Accessory		1 PC		

*Data from VinciSmile lab.

Applications of PERFIT Impression Materials

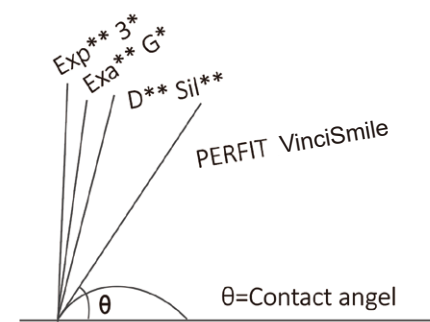
PERFIT	Impression Technique	Indications					
		Crown and Bridge Impressions	Inlay and Onlay Impressions	Implant Impressions	Functional (Full Denture) Impressions	Transparent Impressions	Bite Registration
Putty	Two Materials, Two Steps; Two Materials, One Step	■	■				
Heavy Body	Two Materials, Two Steps; Two Materials, One Step	■	■	■	■		
Regular Body (Transparent)	/					■	
Monophase	One Material, One Step	■	■	■			
Light Body	Two Materials, Two Steps; Two Materials, One Step	■	■	■	■		
Super Light Body	Two Materials, Two Steps; Two Materials, One Step				■		
Bite Registration	Bite Registration						■



Clinical Technical Test Results

Precise · Safe · Efficient

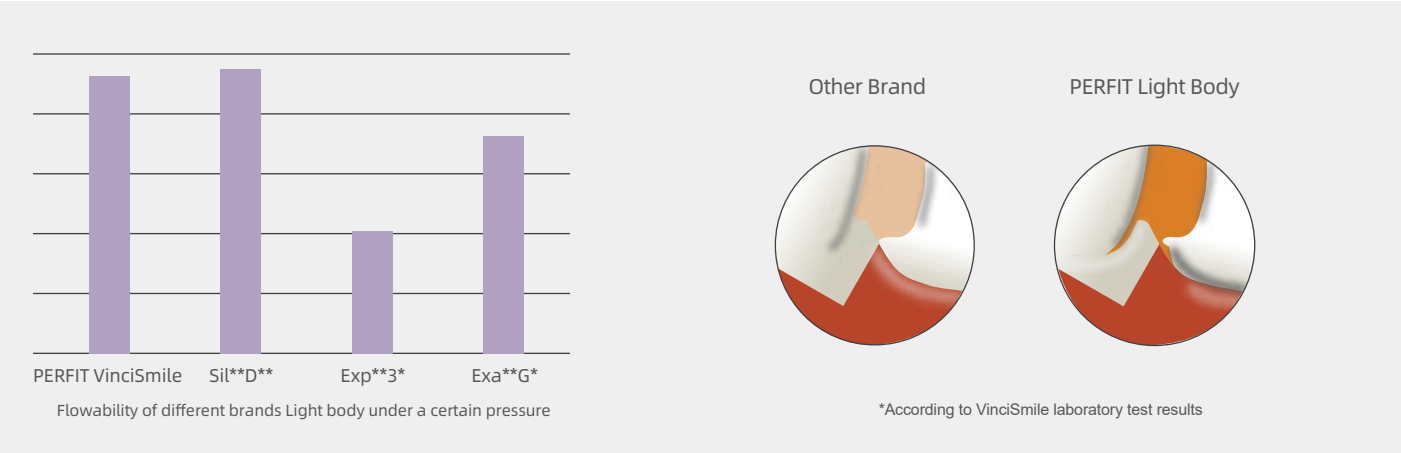
Waterdrop Test



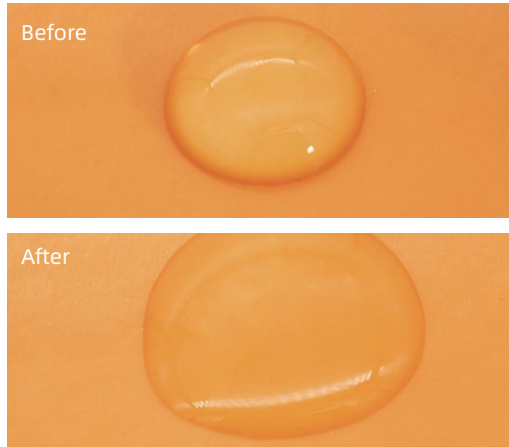
Contact angles of Light body with different brands

Excellent hydrophilicity helps obtain the details quickly and reduce the risk of bubble formation,thus guaranteeing a high level of precision.

Flowability Test



Hydrophilicity test in 2 secs

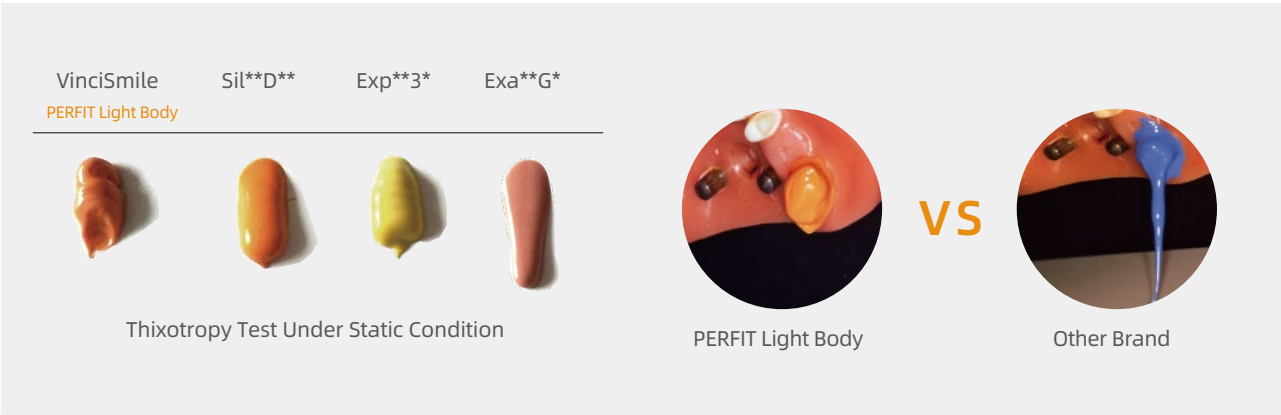
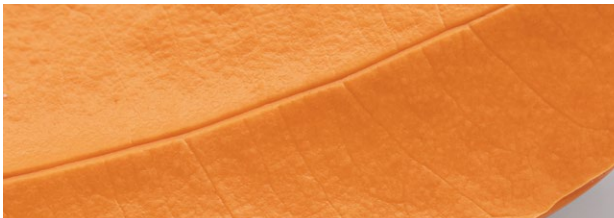


*According to VinciSmile laboratory test results

Drip Test

Outstanding thixotropy ensures a better clinical experience.

High flowability allows it to reach the less accessible spaces of the gingival sulcus.



*According to VinciSmile laboratory test results



Clinical Evaluation and Feedback

PERFIT Heavy Body & Light Body Fast Set



Specific Applications Solutions:

The Heavy Body & Light Body combination can be applied to the traditional two-step impression technique. It offers simpler handling and excellent dimensional stability. We recommend it for implant restorations and full denture impressions.



Unique Benefits:

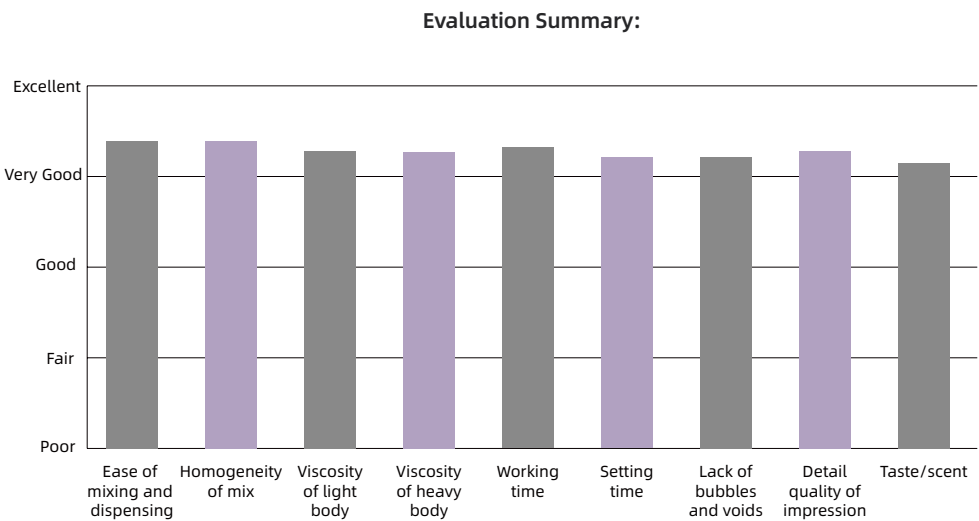
- High hydrophilicity for precise and reliable impressions.
- High tear strength and tensile strength.
- Excellent linear dimensional stability helps maintain impression accuracy for up to 4 weeks.
- Good biocompatibility, safe to use for patients



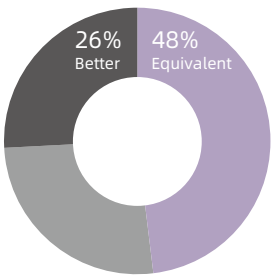
Dental Advisor Evaluators' Comments

"The ease of loading and consistency of this impression material are very good."
"Great detail and handling. Excellent hydrophilic property."
"The color of the light body made it easy to read margin details."
"I loved the set-up time!"
"Pretty good setting time"
"Very clean impressions, easy to express, hydrophilic and worked with our impression tips that seemed to give less bubbles"

"GREAT DETAIL
AND HANDLING.
EXCELLENT
HYDROPHILIC
PROPERTY."



Compared to
Competitive Products:



A Smarter Choice in Glass Ionomer Cement

Effortless Application

- No etching or bonding required for fast, easy, and simple application
- Easier to clean than resin-bonded materials
- X-ray resistant for convenient follow-up and diagnosis

Exceptional Physical Properties

- Durable physical properties, high acid resistance, and low oral solubility
- Optimum thixotropy and ideal film thickness for even application and stable coverage
- Chemically bonds to tooth structure for excellent edge sealing

Superior Biocompatibility

- Excellent biocompatibility and good tissue response
- Releases fluoride ions to promote remineralization and long-term caries prevention
- Ensures little postoperative sensitivity and good pulp response
- Resin-free, suitable for patients with resin allergies
- Ideal for pediatric, geriatric, and special needs patients

Cost-Effective Excellence

- Affordable and reliable, suitable for widespread use



Product Information	Luting I	LuFill HS		Filling I
		For Luting	For Filling	
Powder Liquid Ratio (g/g)	1.6-1.8/1	1.6-1.8/1	2.3-2.5/1	2.3-2.9/1
Mixing Time (min,sec.)	<45"	<45"	<45"	<1'00"
Working Time (min,sec.)	2'10"	2'10"	3'00"	2'20"
Net Setting Time (min,sec.)	3'05"	3'15"	2'45"	2'45"
Compressive Strength (MPa)	/	/	>200	>180
Film Thickness (µm)	12	13	/	/
Standard Packaging (1-1 PKG.)	30g Powder 25g Liquid	30g Powder 25g Liquid	30g Powder 25g Liquid	15g Powder 12g Liquid
Mini Packaging (1-1 PKG.)	10g Powder 10g Liquid	10g Powder 10g Liquid	10g Powder 10g Liquid	5g Powder 5g Liquid
Color System	TR	VITA Color System: A2, A3, A3.5		VinciSmile Color System: A1, A2, A3

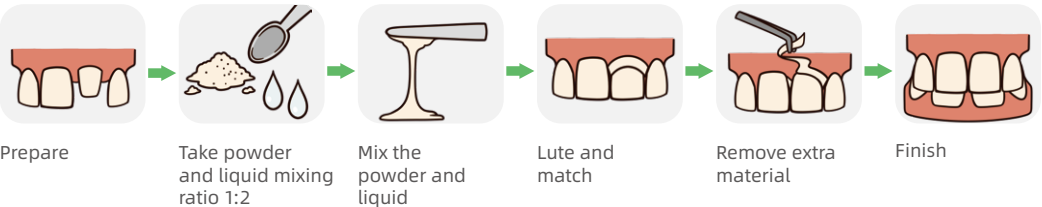


LuFill HS

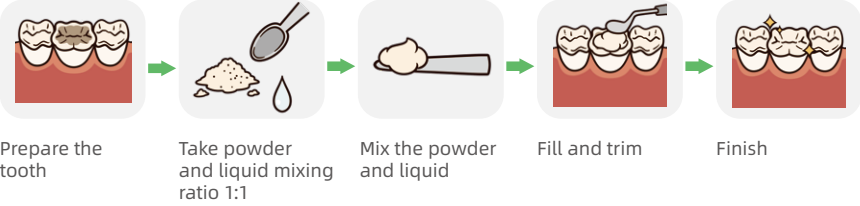
LuFill HS is VinciSmile’s new upgraded product. It is an excellent self-adhesive, bulk glass ionomer cement that guarantees reliable and lasting restorations. The high strength product performance makes this product perform well in routine clinical restoration.



Clinical Operation for Luting



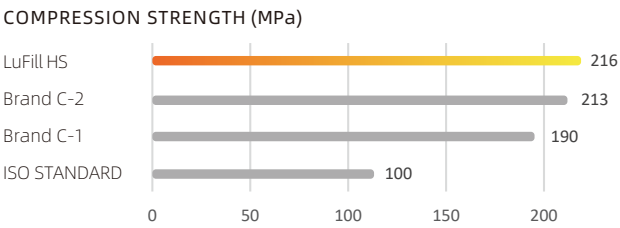
Clinical Operation for Filling



High Strength & Multifunctional

- **Optimized Handling:** Ideal particle size ensures effortless mixing and a superior operating experience.
- **Exceptional Strength:** Boasts a high compressive strength (>200MPa) and excellent flexural strength, guaranteeing durability, longevity, and structural integrity.
- **Robust Physical Properties:** Engineered for high acid resistance and low solubility in the oral environment.
- **Caries Prevention:** Continuous fluoride ion release helps prevent secondary dental caries.
- **Radiopacity:** X-ray resistant for clear diagnostic imagin

Technical Parameters



*Data from VinciSmile lab.



Available in Shades A2, A3, A3.5*



*Vita Color System

Luting I

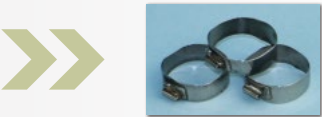
Strong Bonding, Perfect Seal

- **Strong Chemical Bonding:** Ensures excellent marginal seal and long-term durability.
- **Superior Biocompatibility:** Gentle on tissues with excellent clinical acceptance.
- **Optimized Handling:** Ideal thixotropy and ultra-thin film thickness (12µm) for smooth application.
- **High Bond Strength:** Secure adhesion with enamel and dentin (>6MPa).
- **Easy Cleanup:** More convenient than resin-based materials, reducing chair time.

Restore a Wide Range of Clinical Cases

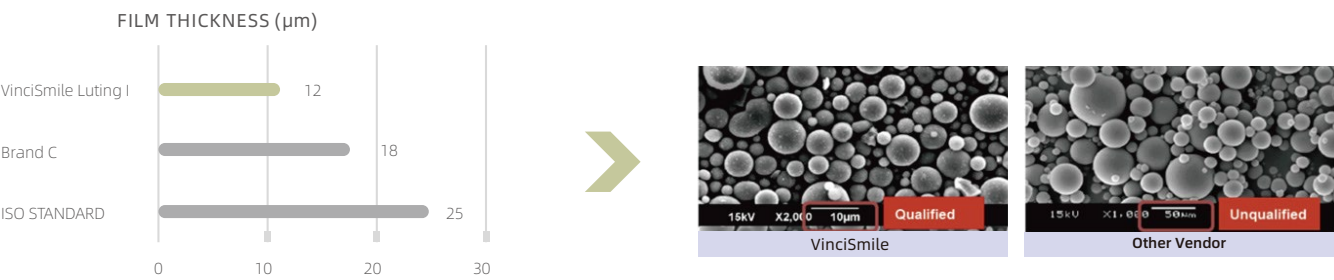
Indication		Luting I
Inlay/Onlay/ Crown/Bridge	Ceramic/Glass Ceramic	✓
	Oxide Ceramic	✓
	Metal/Metal-Based	✓
Post/Screw	Composite Resin	
	Metal	✓
	Oxide Ceramic	✓
Orthodontic Bands		✓

Compared with brand C, VinciSmile Luting I not only provides the same applications, but also has the function of bonding in orthodontic restoration.



Ideal Film Thickness

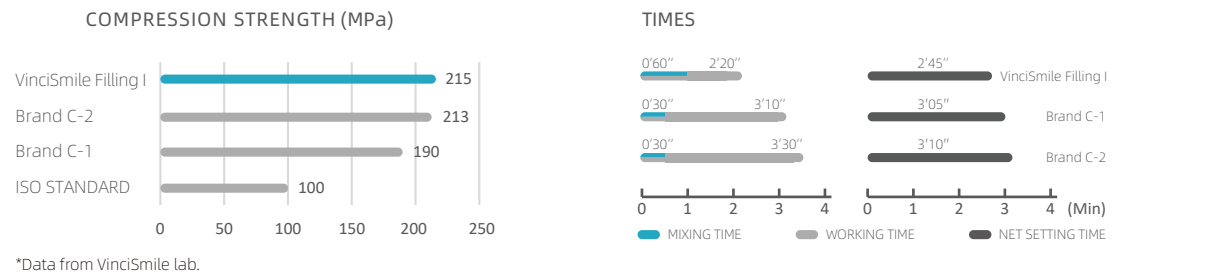
The ideal film thickness will allow the restoration to perfectly fit the abutment without causing clinical elevation.The ISO standard is less than or equal to 25um. The lower the data, the higher the clinical application value.



Filling I

- Easy to mix and provides good operation experience
- High compressive strength (>180MPa)
- Ideal particle size distribution
- Continuous fluoride releasing
- Unique color system provides good aesthetic effect
- X-ray radiopacity

Indication	Class I	Class II	Class III	Class V	Base/ Liner	Core Build-up
Primary teeth	✓	✓	✓	✓	✓	✓
Permanent teeth			✓	✓	✓	✓



A Well-Designed Setting Curve Ensures an Ideal Balance of Time and Viscosity:





Clear Aligner

- Use a series of clear, customized aligners to gradually move teeth into their desired positions.
- Made of a thin, clear plastic material that fits snugly over the teeth, making them virtually invisible.
- Offer an effective, discreet, and convenient way to straighten your teeth and achieve a more confident smile.

Why VinciSmile Clear Aligner?



Your Smile. Our Mission.

- 01

Innovative Double-Aligner System
- 02

Treated 40,000+ Cases
- 03

Expert Orthodontist-Led Team
- 04

Self-developed Software
- 05

Short Turnaround Time
- 06

Professional Training Supports

VinciSmile® Classic

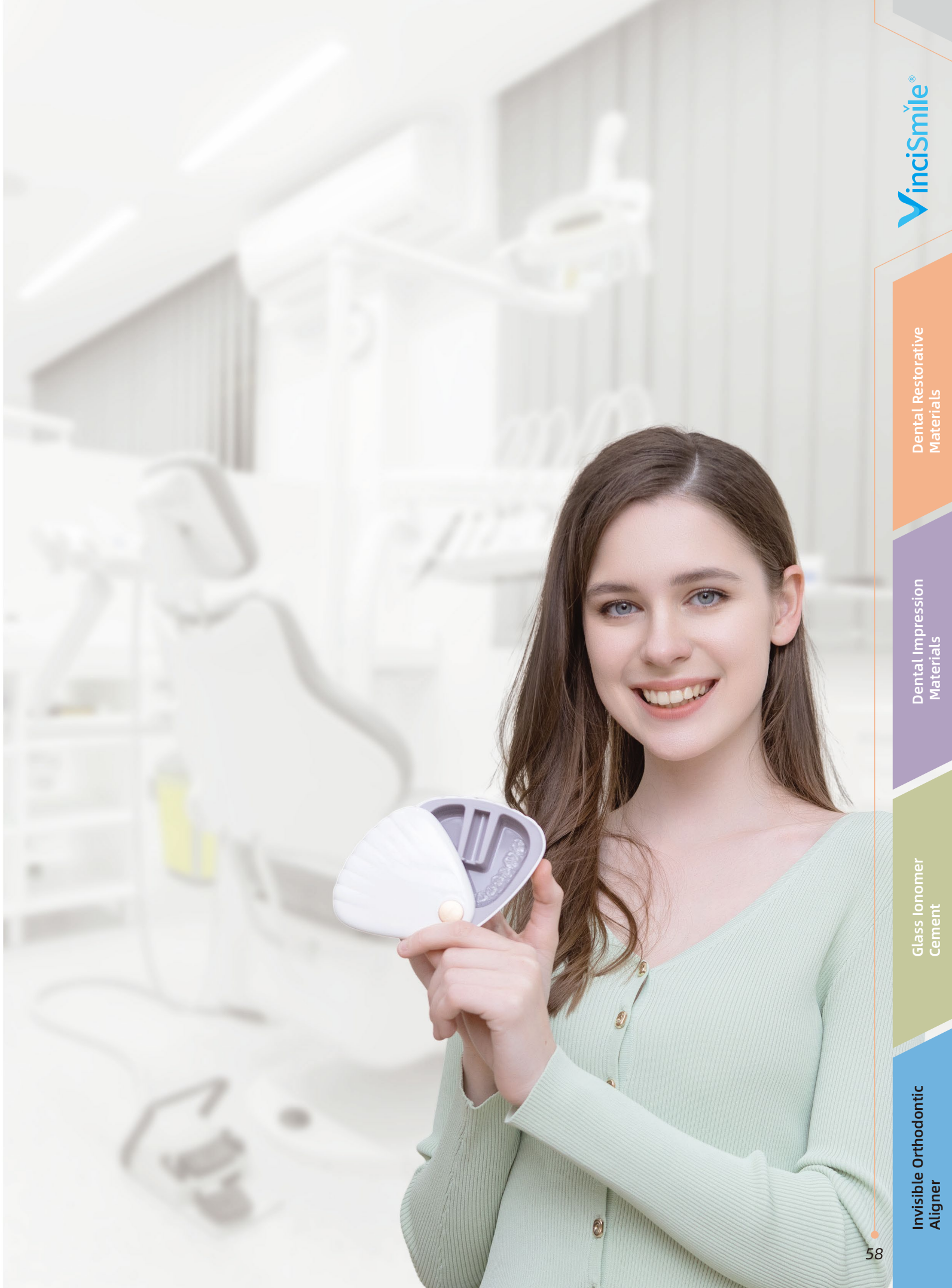
Supported by the Vincismile professional orthodontist team, Vincismile Classic aligners are made from high-quality biomedical polymer material to create new smiles.

VinciSmile® Premium

With a soft aligner and a hard aligner for each step, VinciSmile Premium helps speed up complex tooth movement, even more comfortable.

VinciSmile® Kid

Specially designed for children during the period of deciduous and mixed dentition, featuring upgraded soft materials and kid-specific attachments.



VinciSmile provides scenario-based solutions

VinciSmile offers dentists a comprehensive portfolio of high-quality materials. VinciSmile has been committed to clinical aesthetic restoration, providing more professional solutions.



Implant restoration solutions

VinciSmile focuses on implant solutions. From initial impressions to temporary restorations and final restorations, VinciSmile will be your most reliable partner.



Prevention and caries infiltration

Effective prevention is a priority, especially in the field of dentistry. VinciSmile has been focusing on the prevention of caries, especially the early protection of children's teeth.

We are here for you. VinciSmile.

- All products of VinciSmile brand are carefully produced, strictly controlled and certified.
- Please believe that we have the ability to provide you with safe, reliable and high-quality clinical products.

Shop with us online: www.hugedentalusa.com

You are welcome to contact us directly with any questions.



1639
ISO 13485:2016



VinciSmile promises professional training

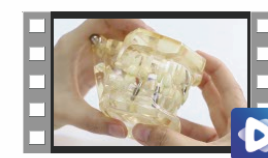
As a partner of dentists, VinciSmile aims to support you in all aspects, including product solutions and practice-related professional training activities.

With a professional R&D and clinical team, VinciSmile has carried out a variety of themed activities for clinical applications.



All Knowledge. All Free.

VinciSmile provides a variety of educational videos and live online courses, introducing VinciSmile's products and scientific background, and providing professional operation guidance. Contact us for more details if you want to know.



VinciSmile Bite Registration Using Tips



VinciSmile Glass Ionomer Cement Introduction



VinciSmile Impression Solutions



VinciSmile Regular Body Operation Guide