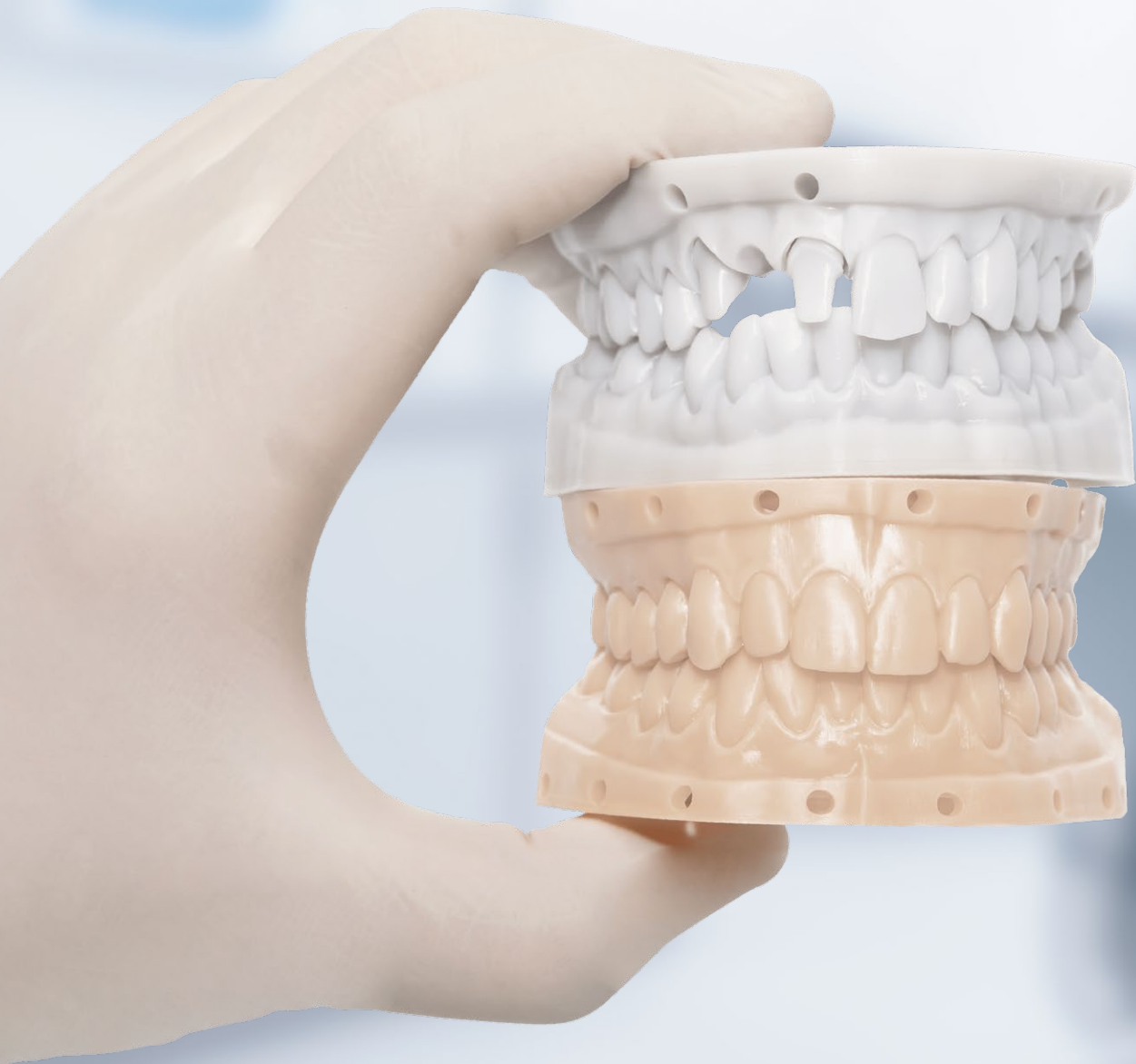


# HUGE

## Dental Model

3D PRINTING MATERIALS



# Dental Model M3.0

Resin for reliable and efficient dental model printing

Dental Model M3.0 offers reliable accuracy and strong mechanical performance, reducing breakage during daily use and post-processing, making it ideal for cost-effective restorative workflows.



Precise printing ensures dependable model quality



Virtually odorless, improved user experience



Excellent dimensional stability for precise fit



Almond color for clear margin visibility



High mechanical strength, reduced breakage risk



FDA and CE certified for medical compliance

## Technical Data

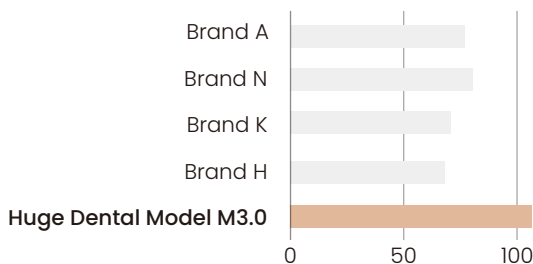
PROPERTY	DENTAL MODEL M3.0
Flexural strength	≥60 MPa
Tensile Modulus	1800-2000 MPa
Elongation at Break	5-10 %
Impact Strength	20-30 J/m
Viscosity @ 25°C	200-400 mPas



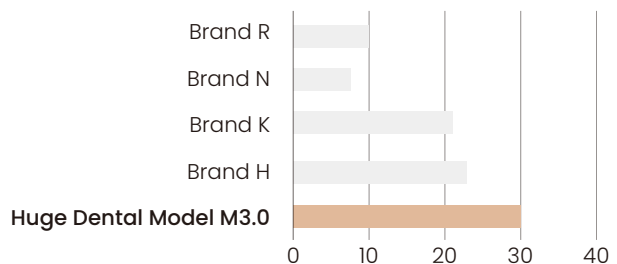
**Higher flexural strength** ensures the model resists bending or deformation during handling and functional testing.

**Higher impact strength** protects the model from breaking when dropped or subjected to sudden force.

Flexural Strength (MPa)



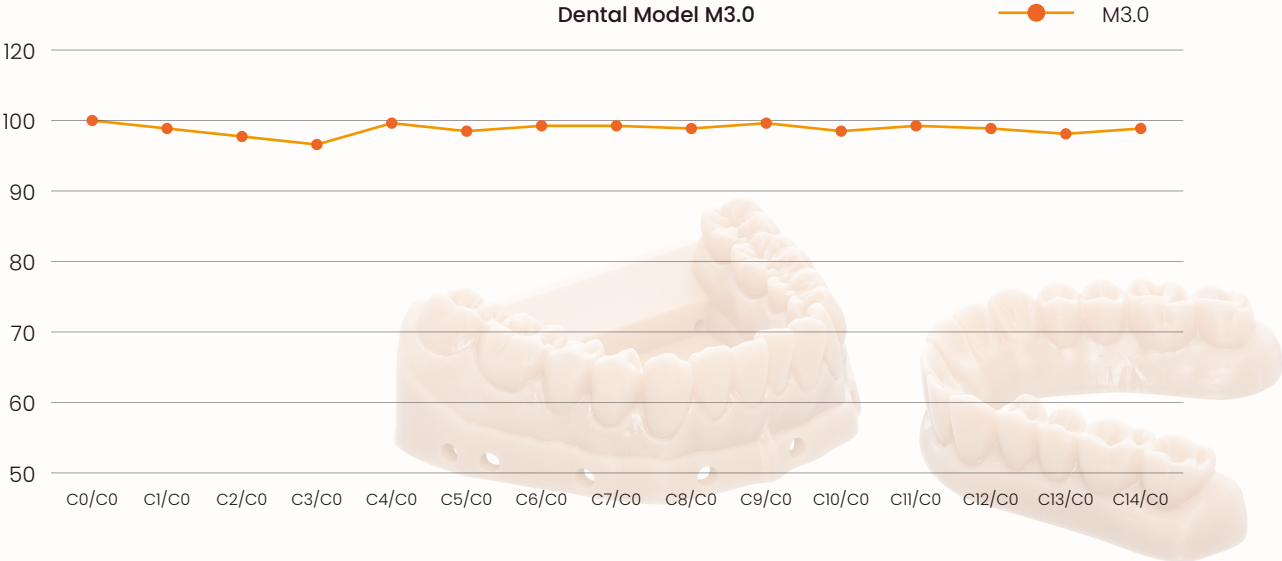
Impact Strength (J/m)



\*Data from Huge lab

# Stable Dimensions for Lasting Fit

Maintains shape after post-curing and storage, ensuring final accuracy and fit.

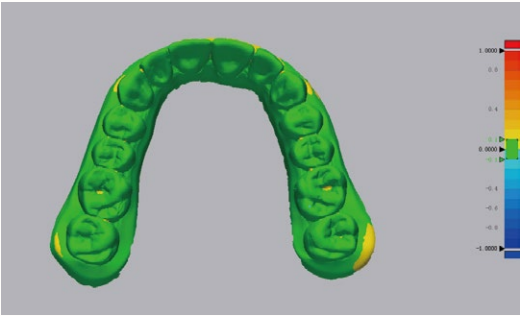


**Dimensional Stability Evaluation Over Time Based on STL Overlay (%) of Orthodontic Models**

*\*Data from Huge lab*

# Reliable Precision for Everyday Use

Achieves 97.0% alignment within  $\pm 0.1$  mm, supporting dependable results in daily workflows.



*Huge Dental Model M3.0  
Overlap Ratio (within  $\pm 0.1$  mm): 97.0%*

**Accuracy Assessment Based on STL Overlay Comparison of Orthodontic Models**

*\*Data from Huge lab*

# Dental Model

## M3.0 Pro

*Resin with enhanced precision and strength for dental models*

Dental Model M3.0 Pro delivers higher precision and reinforced strength, minimizing breakage during trimming, fitting, or frequent handling—built for professionals who need more from every print.



Enhanced precision, suited for demanding master models requiring high detail



Virtually odorless, improved user experience



Excellent dimensional stability for precise fit



Neutral grey color enhances contrast for margin visibility



Outstanding impact strength reduces breakage, ideal for intensive handling or complex cases



FDA and CE certified for medical compliance

### Technical Data

PROPERTY	DENTAL MODEL M3.0 PRO
Flexural strength	≥ 50 MPa
Tensile Modulus	1400–1600 MPa
Elongation at Break	8–9 %
Impact Strength	≥ 50 J/m
Viscosity @ 25°C	1050–1250 mPas

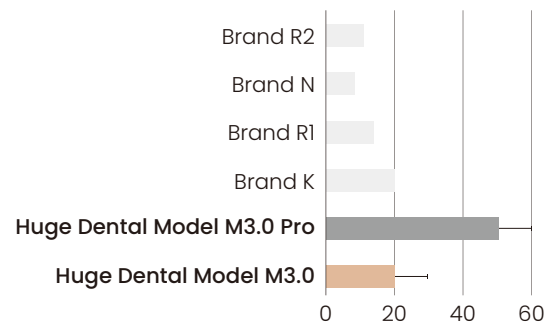
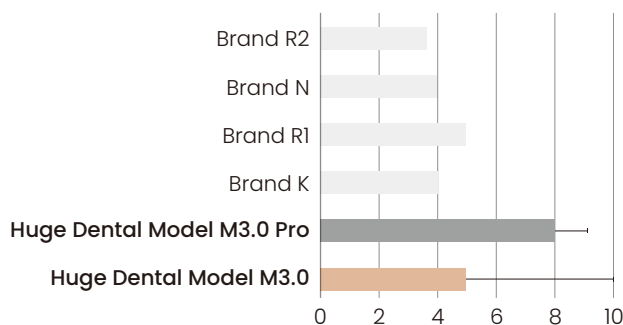


**Higher elongation at break** lets the model flex without cracking, minimizing chipping during trimming or fitting.

**Outstanding impact strength** provides reinforced durability beyond standard materials—resisting drops, pressure, and heavy daily use.

Elongation at Break (%)

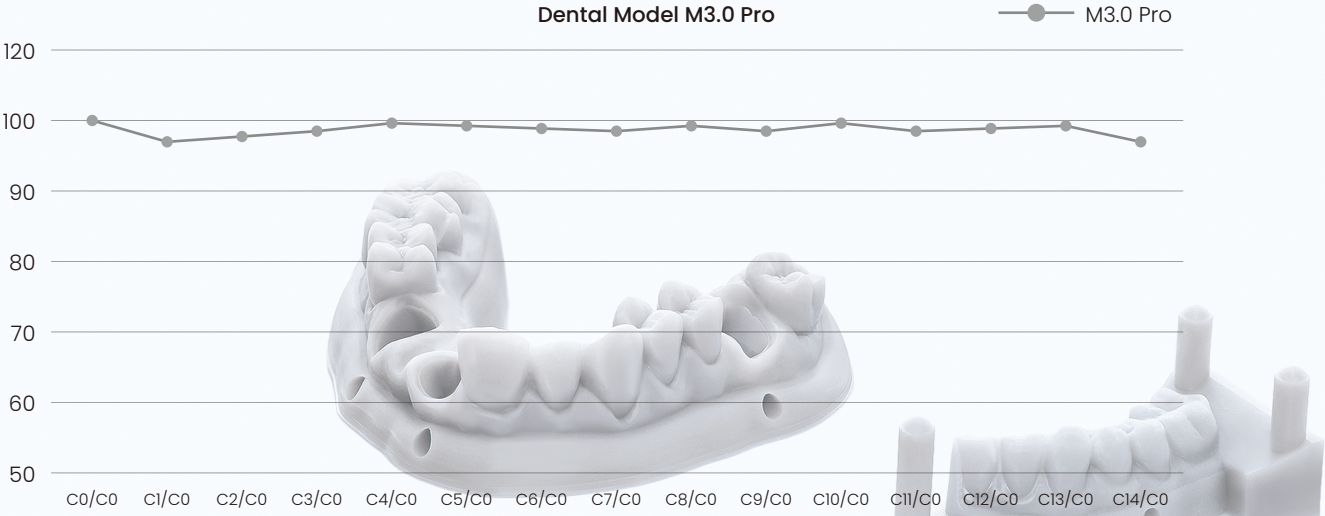
Impact Strength (J/m)



\*Data from Huge lab

# Stable Dimensions for Lasting Fit

Maintains shape after post-curing and storage, ensuring final accuracy and fit.

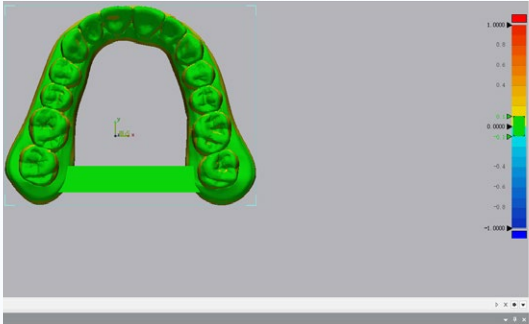


**Dimensional Stability Evaluation Over Time Based on STL Overlay (%) of Orthodontic Models**



# Advanced Accuracy You Can Trust

Achieves 99.9% accuracy within ±0.1 mm, exceeding standard model performance for diagnostic and restorative reliability.



Huge Dental Model M3.0 Pro  
Overlap Ratio (within ±0.1 mm): 99.9%



Huge Dental Model M3.0 Pro  
Overlap Ratio (within ±0.05 mm): 97.5%

**Accuracy Assessment Based on STL Overlay Comparison of Orthodontic Models**

\*Data from Huge lab

# HOW TO CONNECT?

## HUGE DENTAL Worldwide

Email: [marketing@hugedental.com](mailto:marketing@hugedental.com)

Web: [www.hugedental.com](http://www.hugedental.com)

## United States

Tel: +1 626-283-5808

Email: [info@hugedentalusa.com](mailto:info@hugedentalusa.com)

Web: [www.hugedentalusa.com](http://www.hugedentalusa.com)

## India

Tel: +91 - 7718822266

Email: [marketing@hugedental.com](mailto:marketing@hugedental.com)

Web: [www.hugedental.in](http://www.hugedental.in) (coming soon)



## Shandong Huge Dental Material Corporation

Add / No.68 Shanhai Road, Donggang District, Rizhao City, Shandong Province,  
276800, P.R. China.

Tel / +86 (633) 2277268   [marketing@hugedental.com](mailto:marketing@hugedental.com)   [www.hugedental.com](http://www.hugedental.com)



Follow @Huge Dental